

TOSHIBA

Windows POS Terminal

ST-C10

**Windows XP / Windows 7 / WEPOS 1.1 /
POSReady 2009 / POS Ready 7
Operating System Setup Guide**

Second Edition : 23 Feb, 2012

TOSHIBA TEC CORPORATION

Table of Contents

1. Overview	2
2. Set up for Windows XP (or WEPOS, POSReady 2009).....	3
2.1. Operating System Installation	3
2.1.1. Windows XP installation.....	3
2.1.2. WEPOS installation.....	4
2.1.3. POSReady2009 installation.....	5
2.2. Intel Chipset Software Installation	9
2.3. Intel Graphic Accelerator Driver Installation.....	13
2.4. Intel Network Driver Installation.....	17
2.5. Realtek Audio Driver Installation	20
2.6. Universal Touch Panel Driver Installation	23
2.7. Setup for Display	28
3. Setup for Windows 7 Professional (or POSReady 7)	29
3.1. Operating System Installation	29
3.2. Intel Chipset Software Installation	29
3.3. Intel Graphic Accelerator Driver Installation.....	32
3.4. Intel Network Driver Installation.....	37
3.5. Realtek Audio Driver Installation	40
3.6. Universal Touch Panel Driver Installation	42
3.7. Setup for Display	47
4. Notice and Limitation	48
4.1. Notice	48
4.1.1. About Power management of USB-HUB	48
4.1.2. Setting of Wake On LAN.....	49
4.1.3. Dual Display connection combinations list.....	50
4.1.4. "Optional Components" setting in POSReady 2009 installation.....	51
4.2. Limitation	52
4.2.1. SD card device is always detected without inserting SD card.	52
4.2.2. Limitation about Wake up by USB keyboard / mouse from S3.....	52
4.2.3. Extended display mode in POSReady2009.....	53
4.2.4. Limitation of Windows Time Service	53

Copyright © 2011 Toshiba TEC Corporation All rights reserved. It is prohibited to use or duplicate a part or whole of this document without the permission of Toshiba TEC Corporation.

This document is subject to change without prior notice.

Trademark Notification

- * Microsoft, Windows, Windows XP, WEPOS, POSReady 2009, Windows 7 and POSReady 7 are registered trademarks of Microsoft Corporation in the United States and/or other countries.
The official name of Windows is the "Microsoft Windows Operating System".
- * All other product names mentioned in this document are trademarks or registered trademarks of their respective owners.

1. Overview

This document describes the procedures and cautions of Windows operating system and the drivers installation on the ST-C10.

The outline of procedures to install Windows operating system and the drivers on the ST-C10 are as follows.

Installation Procedure of Windows operating system and the drivers:

1. Operating System Installation
2. Intel Chipset Software Installation
3. Intel Graphic Accelerator Driver Installation
4. Intel Network Driver Installation
5. Realtek Audio Driver Installation
6. Setup for Display

There is supplementary setup document for each display type..

- TFTST-B20: TFTST-B20 Setup Guide

2. Set up for Windows XP (or WEPOS, POSReady 2009)

2.1. Operating System Installation

2.1.1. Windows XP installation

Setting before and after installation:

During Installation of Windows XP, system will detect the connected HDD as drive E: instead of C: drive.

This symptom is due to this system has SD card reader, and it is always detected as storage device even without inserting SD card.

There is Windows XP restriction about this symptom in Microsoft HP.

<http://support.microsoft.com/kb/326683>

To prevent the above symptom, below workaround in install procedure is necessary.

1. Enter BIOS setup menu, and change below menu to Disabled the SD card device.
[Chipset] -> [South Bridge] -> [Front USB/SD/FPS/i-Button port] -> [Disabled] (Default is Enabled)

However, if this menu is set to Disabled, Front USB port is also disabled,
So, do not connect USB keyboard or mouse to Front USB port during Windows XP installation.

2. Execute [Save Changes and Reset], then system reboots.
3. Boot from CD/DVD for Windows XP installer.
4. Install Windows XP as normal procedure.
5. After install Windows XP, enter BIOS setup menu and execute "Load Default" and "Save Changes and Reset" to enable SD card device or Front USB port or other device port.

Note: "Install to USB" is not supported in Windows XP.
So, uDOC device can't be used for Windows XP installation.

Setting during installation:

Any especial setting is not necessary during installation.

Subsequently, follow the instructions of the Windows installer to complete the installation.

2.1.2. WEPOS installation

Setting before and after installation:

During Installation of WEPOS, system will prompt a message “The device is not ready “, and the installation cannot be continued.

This symptom is due to this system has SD card reader, and it is always detected as storage device even without inserting SD card.

To prevent the above symptom, below workaround in install procedure is necessary.

1. Enter BIOS setup menu, and change below menu to Disabled the SD card device.
[Chipset] -> [South Bridge] -> [Front USB/SD/FPS/i-Button port] -> [Disabled] (Default is Enabled)

However, if this menu is set to Disabled, Front USB port is also disabled,

So, do not connect USB keyboard or mouse to Front USB port during Windows XP installation.

2. Execute [Save Changes and Reset], then system reboots.
3. Boot from CD/DVD for WEPOS installer.
4. Install WEPOS as following procedure
5. After install WEPOS, enter BIOS setup menu and execute “Load Default” and “Save Changes and Reset” to enable SD card device or Front USB port or other device port.

Note: “Install to USB” is not supported in WEPOS.

So, uDOC device can't be used for WEPOS installation.

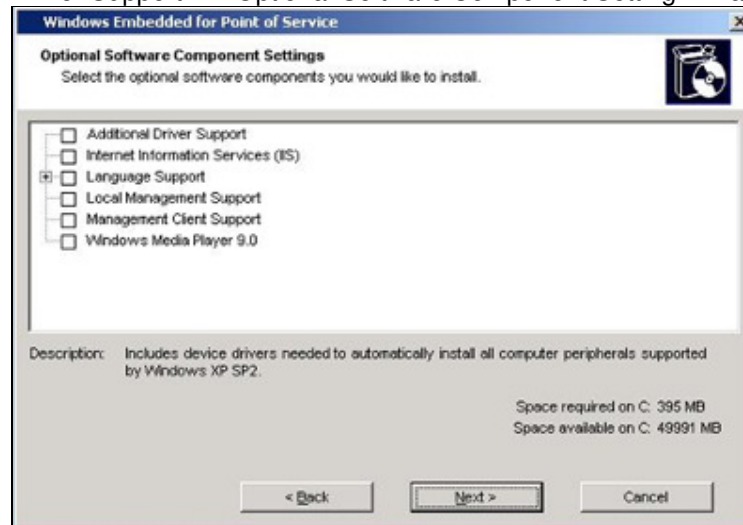
Setting during installation:

During WEPOS installation, it is necessary to check “Additional Driver Support” in “Optional Software Component Setting” wizard.

If “Additional Driver Support” component is not checked on “Optional Software Component Setting” wizard, the “Unknown device” is shown under processor in device manager after install.

Refer to below instruction to install “Additional Driver Support” component in “Optional Software Component Setting” wizard.

Check “Additional Driver Support” in “Optional Software Component Setting” wizard



Check other options if necessary, and click on the “Next” button.
 (Basically, it is better to check all components for much OS functions.)
 Subsequently, follow the instructions of the Windows installer to complete the installation.

Note: In WEPOS, you could not add unselected components after finishing installation.

2.1.3. POSReady2009 installation

Setting before and after installation:

If POSReady2009 is installed in SATA HDD, any especial setting is not necessary before and after installation.

But, if POSReady2009 is installed in uDOC device, below setting is necessary.

During Installation of POSReady 2009 in uDOC devices, system will prompt a message

“Exception: Physical sectors cannot be written to the hard drive. “

and the installation cannot be continued.

This symptom is due to this system has SD card reader, and it is always detected as storage device even without inserting SD card.

To prevent the above symptom, below workaround in install procedure is necessary.

1. Enter BIOS setup menu, and change below menu to Disabled the SD card device.
 [Chipset] -> [South Bridge] -> [Front USB/SD/FPS/i-Button port] -> [Disabled] (Default is Enabled)

However, if this menu is set to Disabled, Front USB port is also disabled,

So, do not connect USB keyboard or mouse to Front USB port during POSReady 2009 installation.

2. Execute [Save Changes and Reset], then system reboots.
3. Boot from CD/DVD for POSReady 2009 installer.
4. Install POSReady 2009 as following procedure.
5. After install POSReady 2009, enter BIOS setup menu and execute “Load Default” and “Save Changes and Reset” to enable SD card device or Front USB port or other device port.

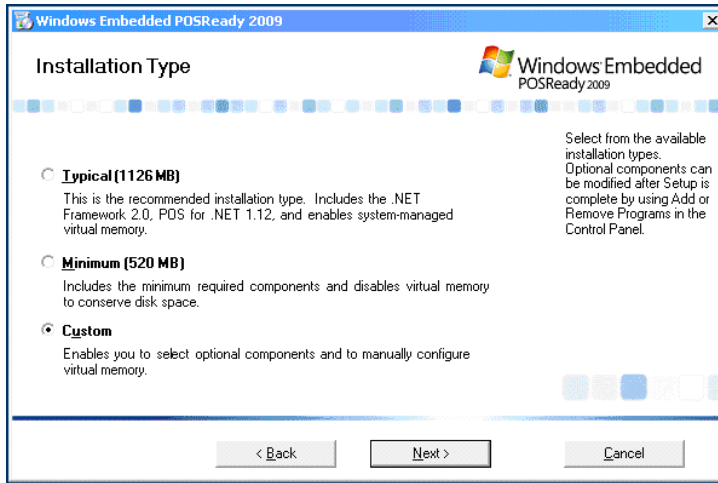
Setting during installation:

During POSReady 2009 installation, it is necessary to select “Custom” installation in “Installation Type” wizard. It allows installation of “Additional Drivers” component in “Optional Components” wizard.

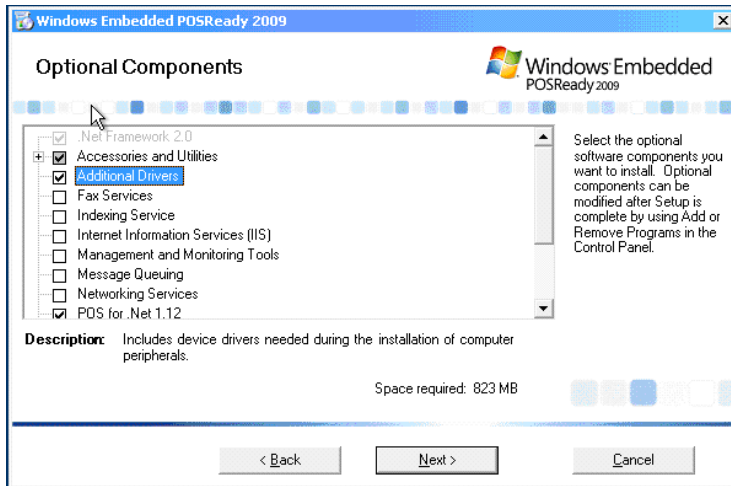
If “Typical” or “Minimum” is selected in “Installation Type” wizard, or “Additional Drivers” component is not checked on “Optional Components” wizard, the screen prompts which requests “.sys” file or “.dll” file is displayed during driver installation. (Chipset, Audio, OPOS driver, etc)

Refer to below instruction to install “Additional Drivers” component in “Optional Components” wizard.

Select “Custom” in “Installation Type” wizard and click on the “Next” button.



Check “Additional Drivers” in “Optional Components” wizard.



Check other options if necessary, and click on the “Next” button.

(Basically, it is better to check all components for much OS functions.)

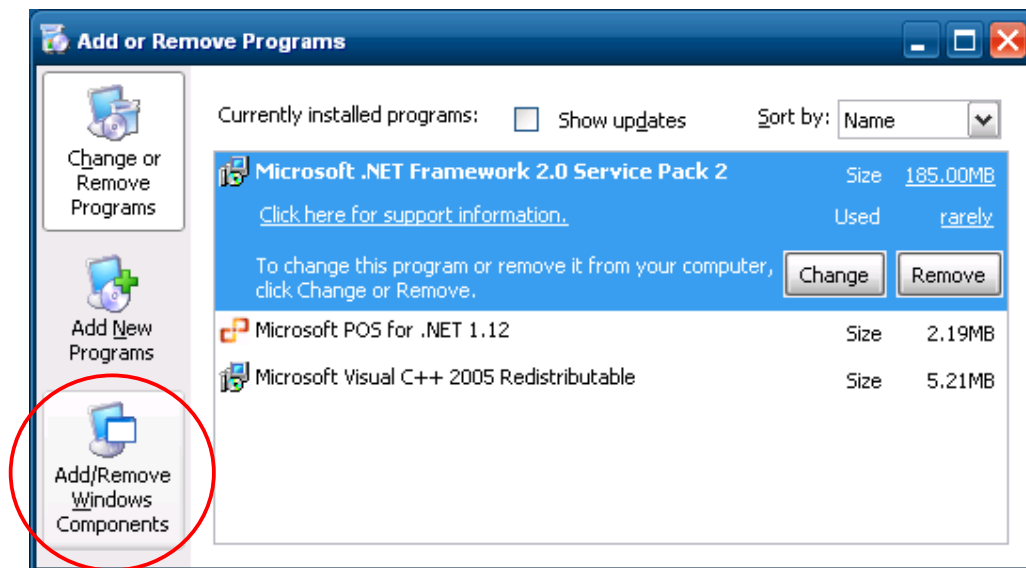
Subsequently, follow the instructions of the Windows installer to complete the installation.

Note: In POSReady2009, optional components can be modified after finishing the installation. Please refer to following procedure.

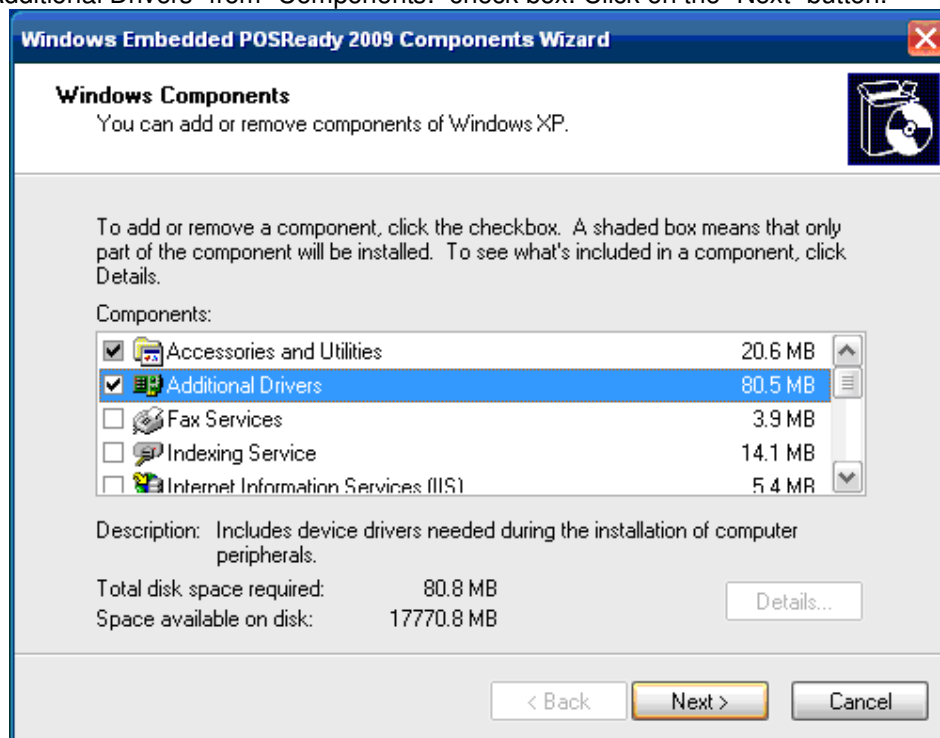
Addition for “Additional Drivers” Component after installation:

When you did not install “Additional Drivers” during POSReady2009 installation for Operating System, install the component to refer as follow.

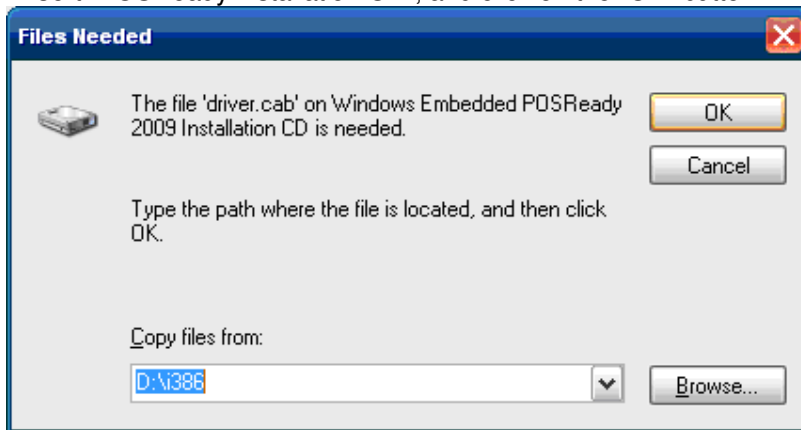
Open “Add or Remove Programs” from “Control Panel”. Then, click on the “Add/Remove Windows Components” button.



Check “Additional Drivers” from “Components:” check box. Click on the “Next” button.



During installation for the component, you need “Windows Embedded POSReady 2009 Installation CD”. Insert “POSReady installation CD”, and click on the “OK” button.



System does not reboot automatically after finishing installation.
Please reboot manually.

2.2. Intel Chipset Software Installation

Run “infinst_autol.exe” in the “ST-C10WinV1xxx\Intel\Chipset” folder in the Driver kit. After a while, the following window appears. Click on the “Next” button.

*xxx means version number of driver kit.



The “License Agreement” window appears. Confirm the contents. If you agree, click on the “Yes” button.

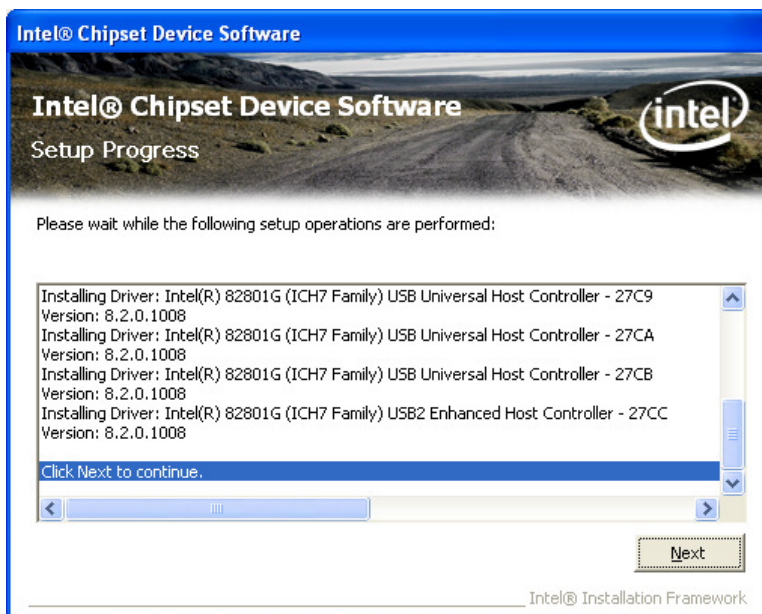


The “Readme File Information” window appears. Click on the “Next” button.



The “ Setup Progress” window appears, and starts the installation.

After a while, the “Next” button is changed to the status that can be clicked, click on the button.



When the installation is completed successfully, the following window appears. Check the “Yes, I want to restart this computer now” radio button, and then click on the “Finish” button to reboot POS Terminal.



Note: Chipset driver Installation for POSReady 2009

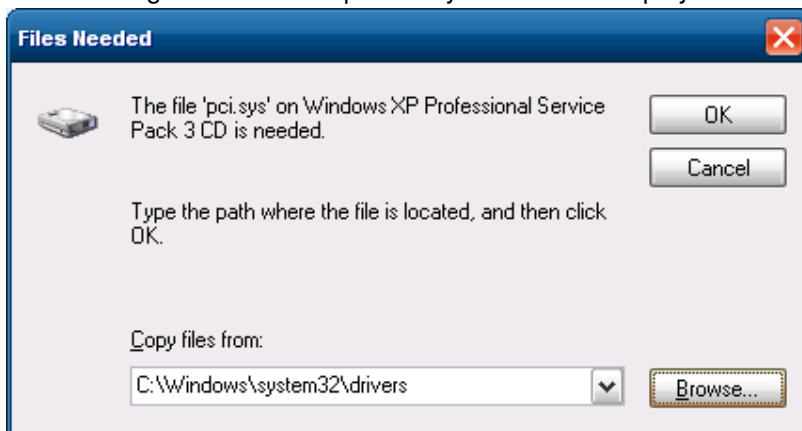
In the case of POSReady 2009, the installation process will request several “.sys” file or “.dll” file. And the below screen will be displayed several times.

Please set the path for the location of “.sys” file or “.dll” file each time.

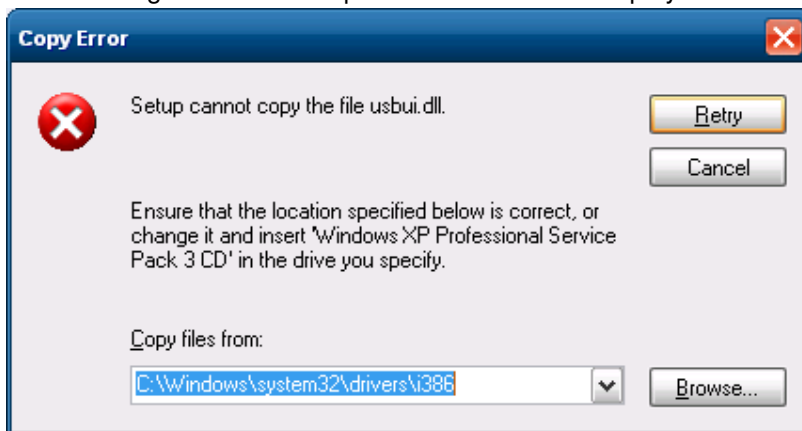
When “.sys” file is requested -> Set the path to “c:\windows\system32\drivers”

When “.dll” file is requested -> Set the path to “c:\windows\system32”

The following screen is to request “.sys” file will be displayed several times.



The following screen is to request “.dll” file will be displayed several times.

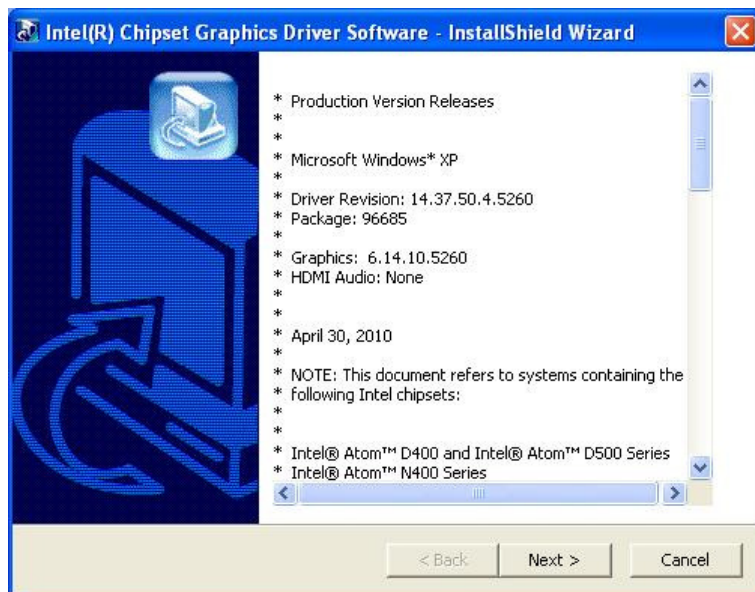


Note: If “Additional Drivers” of “Optional Components” is installed additionally in POSReady 2009 installation, these screen is not displayed.

2.3. Intel Graphic Accelerator Driver Installation

Run “winxp.exe” in the “ST-C10WinV1xxx\Intel\Graphic\2K_XP_WEPOS_POSReady” folder in the Driver kit. The following window appears. Click on the “Next” button.

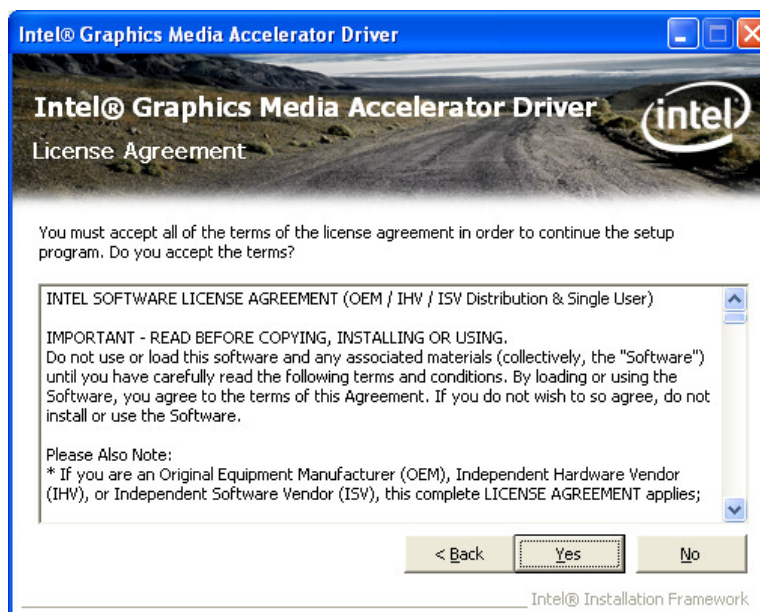
*xxx means version number of driver kit.



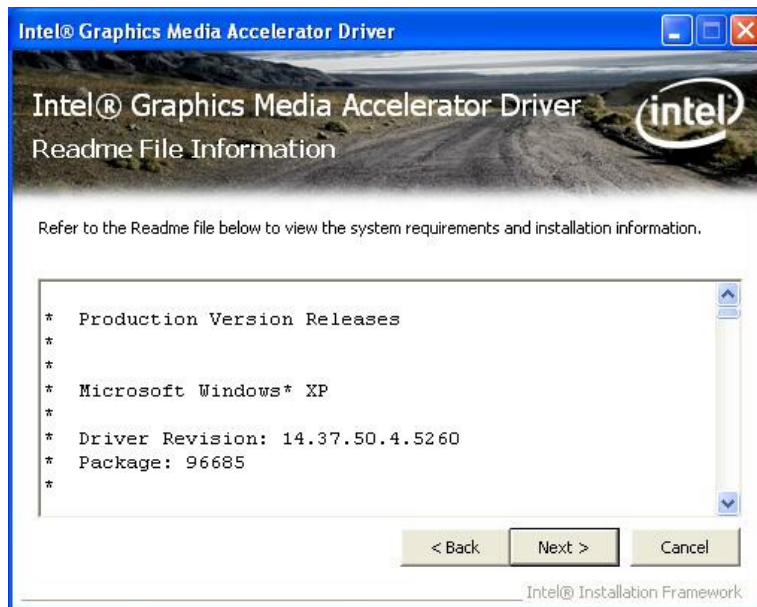
After a while, the following window appears. Click on the “Next” button.



The “License Agreement” window appears. Confirm the contents. If agree, click on the “Yes” button.

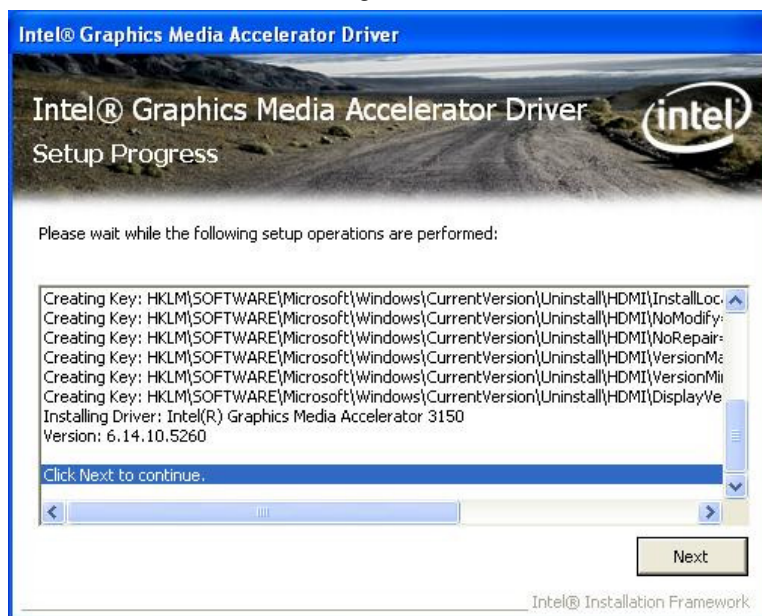


The “Readme File Information” window appears. Click on the “Next” button.

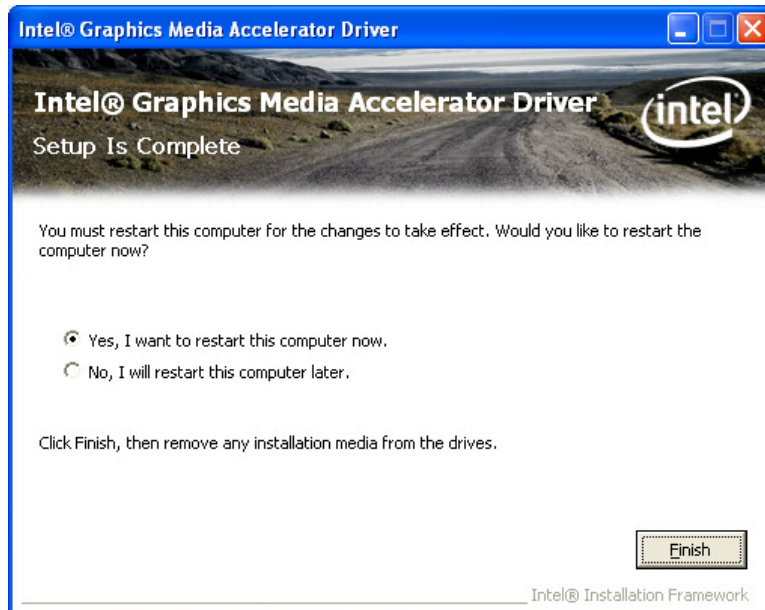


The "Setup Progress" window appears, and starts the installation.

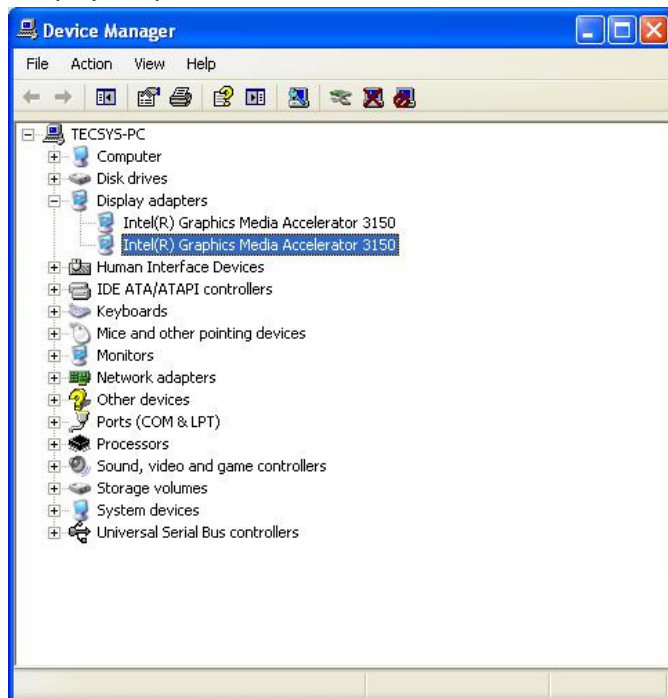
After the "Next" button is changed to the status that can be clicked, click on the button.



When the installation is completed successfully, the following window appears. Check the “Yes, I want to restart this computer now” radio button, then click on the “Finish” button to reboot POS Terminal.



After rebooting the POS Terminal, open Device Manager to confirm the graphic driver has been installed. Make sure that “Intel(R) Graphics Media Accelerator 3150” is registered under the “Display adapters” icon.



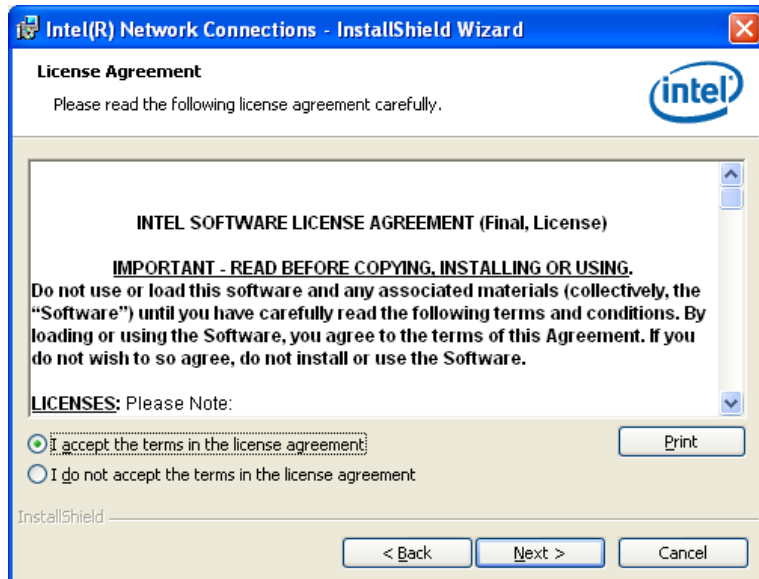
2.4. Intel Network Driver Installation

Run "PROWin32.exe" in the "ST-C10WinV1xxx\Intel\LAN\XP_WEPOS_POSReady" folder in the Driver kit. After a while, the following window appears. Click on the "Next" button.

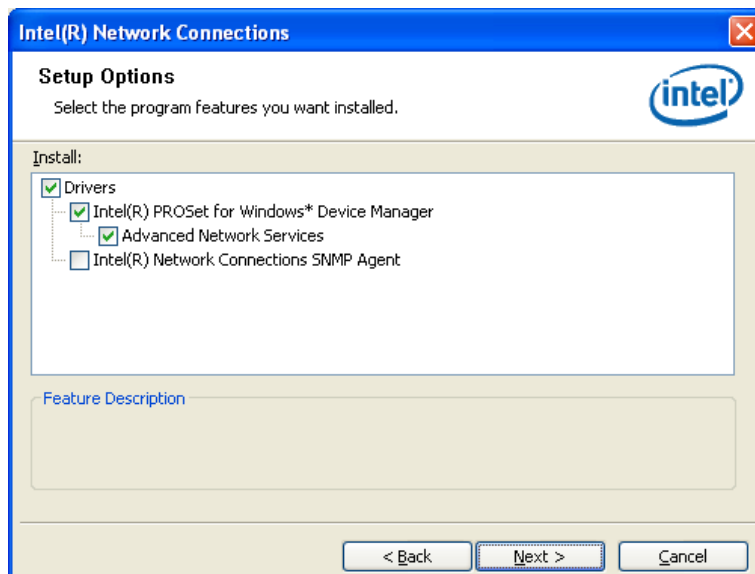
*xxx means version number of driver kit.



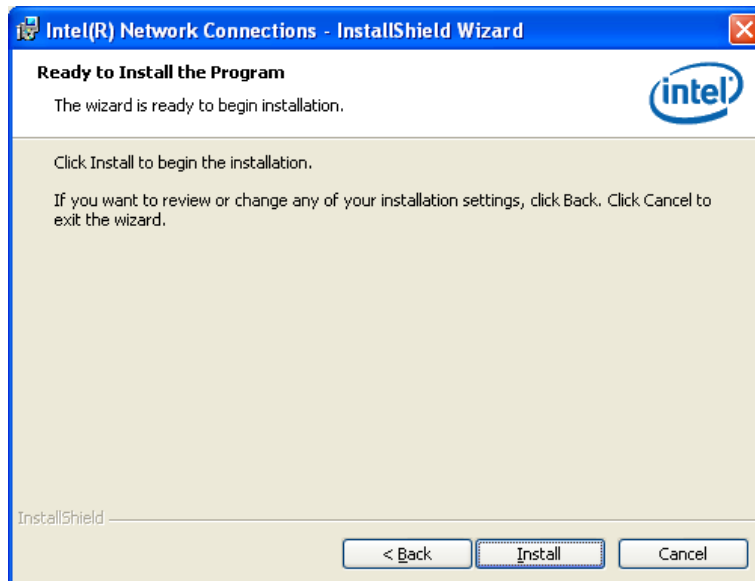
The "License Agreement" window appears. Confirm the contents. If agree, check the "I accept the terms in the license agreement" radio button and click on the "Next" button.



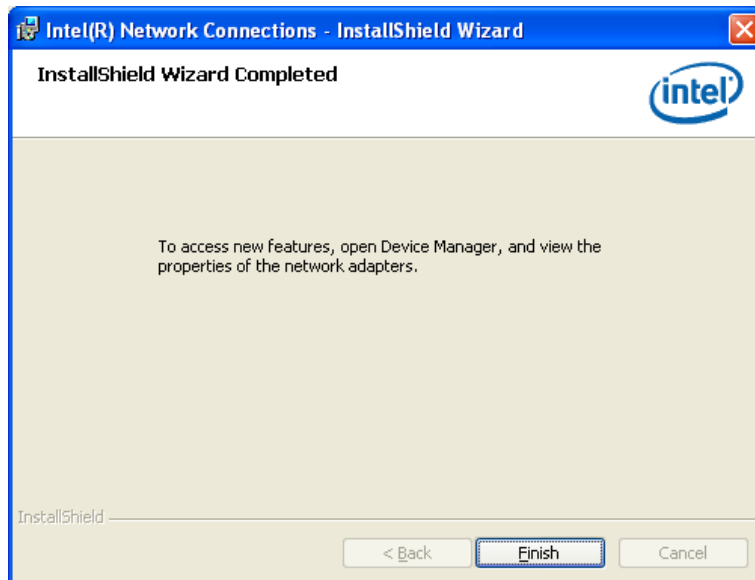
The “Setup Options” window appears. If there is nothing specially required, click on the “Next” button with default condition.



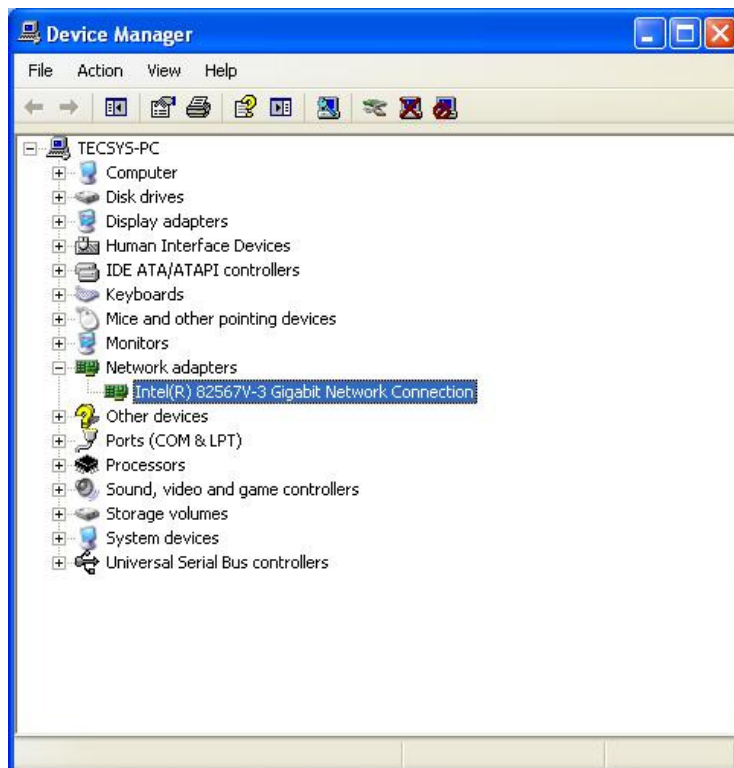
The following window appears. Click on the “Install” button to start the installation.



After completing the installation, the following window appears.
Click on the “Finish” button to complete the installation.



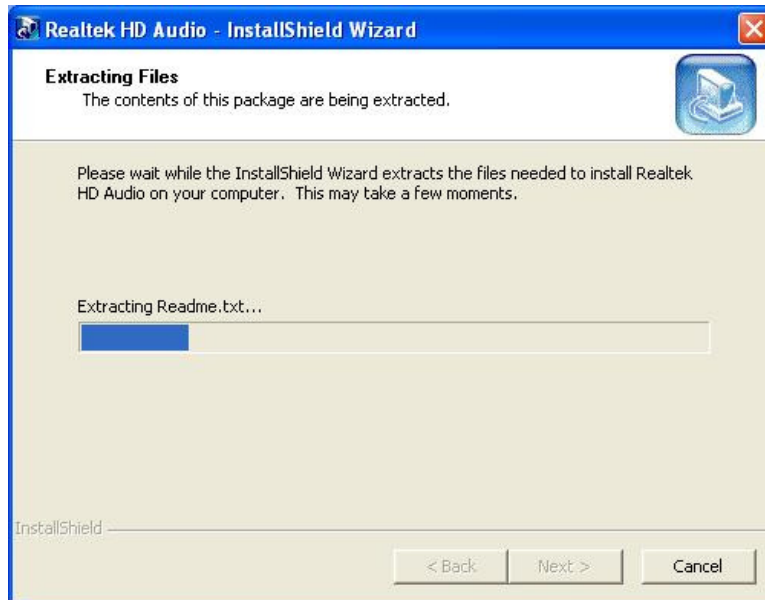
Open Device Manager to confirm the network driver has been installed. Make sure that “Intel(R) 82567V-3 Gigabit Network Connection” is registered under the “Network adapters” icon.



2.5. Realtek Audio Driver Installation

Run “WDM_R256.exe” in the “ST-C10WinV1xxx\Intel\Audio\XP_WEPOS_POS Ready” folder in the Driver kit. After a while, the following window appears.

*xxx means version number of driver kit.



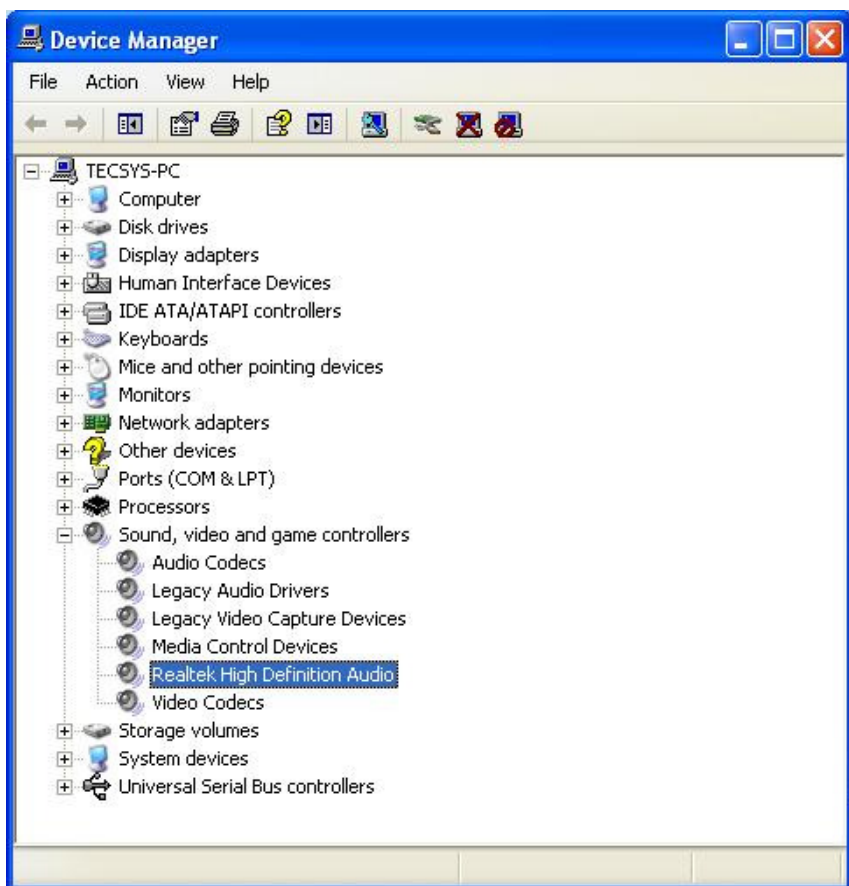
After a while, the following window appears, click on the “Yes” button.



When the installation is completed successfully, the following window appears. Check the “Yes, I want to restart my computer now” radio button, and then click on the “OK” button to reboot POS Terminal.



After rebooting the POS Terminal, open Device Manager to confirm the audio driver has been installed. Make sure that “Realtek High Definition Audio” is registered under the “Sound, video and game controllers” icon.



Note: Audio driver Installation for POSReady 2009

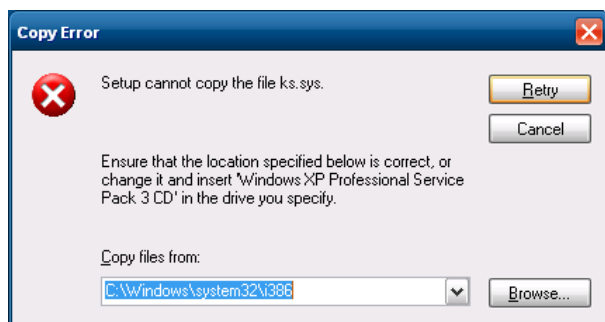
In the case of POSReady 2009, the installation process will request several "*.sys" file or "*.dll" file. And the below screen will be displayed several times.

Please set the path for the location of "*.sys" file or "*.dll" file each time.

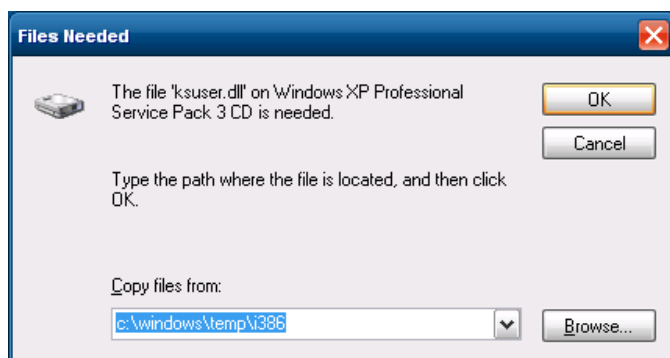
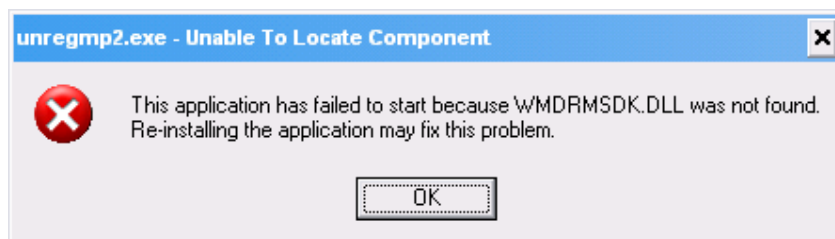
When "*.sys" file is requested -> Set the path to "c:\windows\system32\drivers"

When "*.dll" file is requested -> Set the path to "c:\windows\system32"

The following screen is to request "*.sys" file will be displayed several times.



The following screen is to request "*.dll" file will be displayed several times.

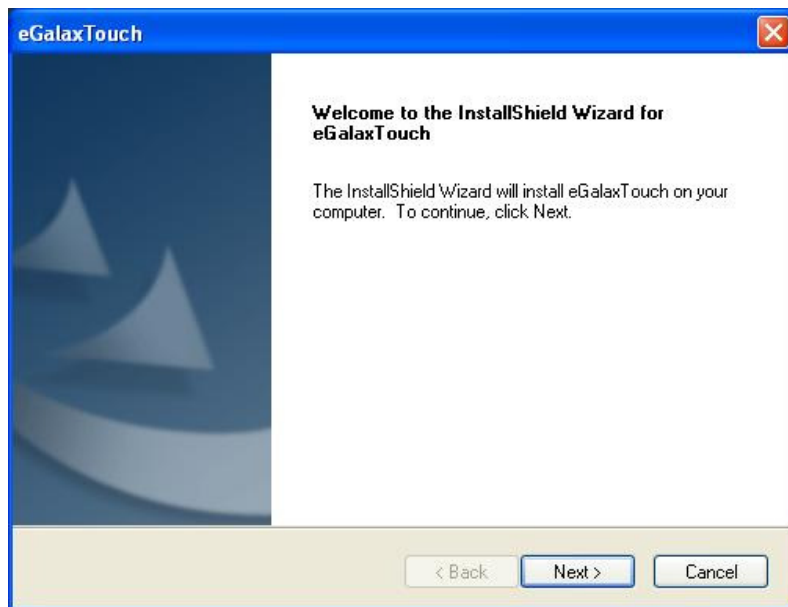


Note: If "Additional Drivers" of "Optional Components" is installed additionally in POSReady 2009 installation, these screen is not displayed.

2.6. Universal Touch Panel Driver Installation

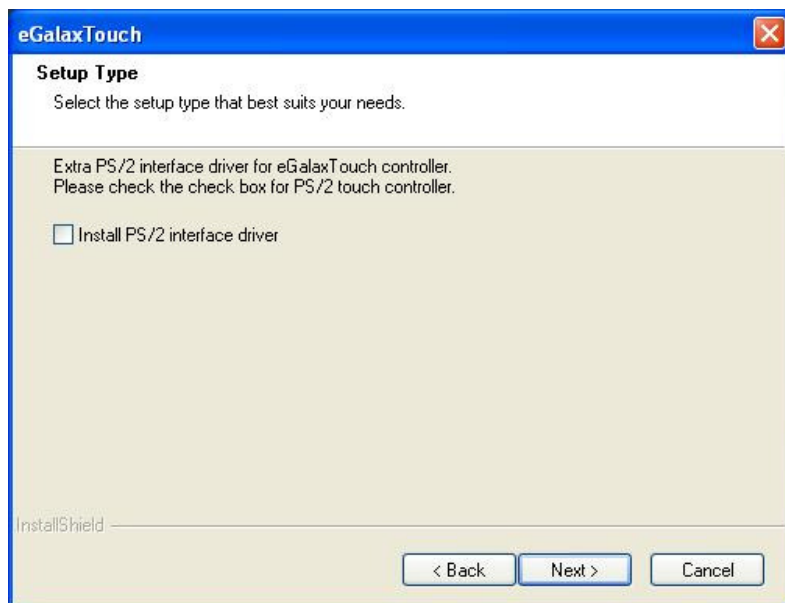
Run “setup.exe” in the “ST-C10WinV1xxx\TouchPanel\Universal\XP_WEPOS_POS Ready\All_In_One_2k_XP_Vista_5.6.0.6806” folder in the Driver kit. After a while, the following window appears, click on the “Next” button.

*xxx means version number of driver kit.

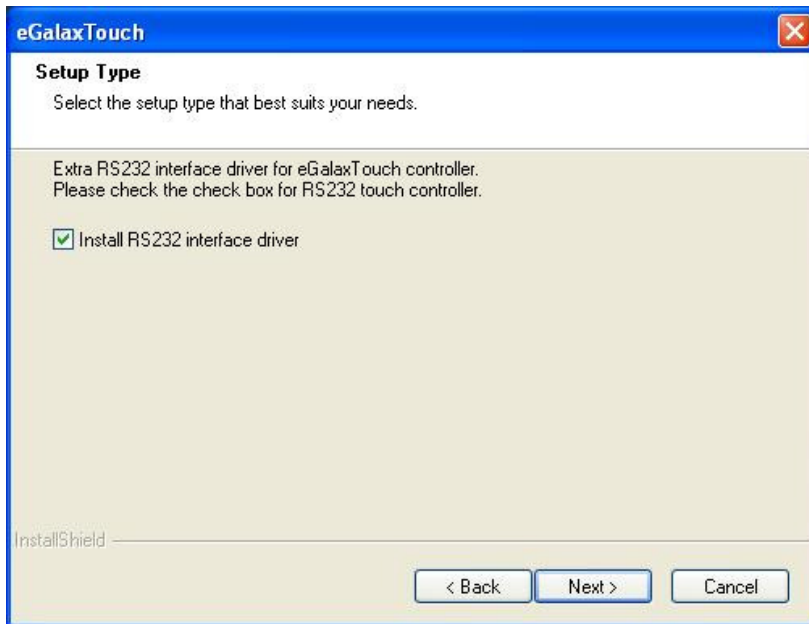


The following window appears. Click on the “Next” button.

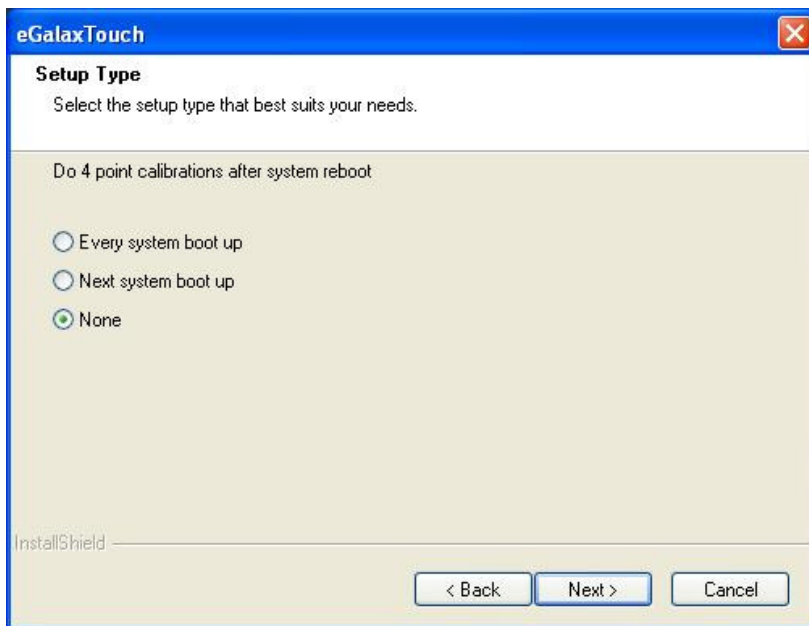
* Do not check the “Install PS/2 interface driver”.



Check “Install RS232 interface driver” box. Click on the “Next” button.



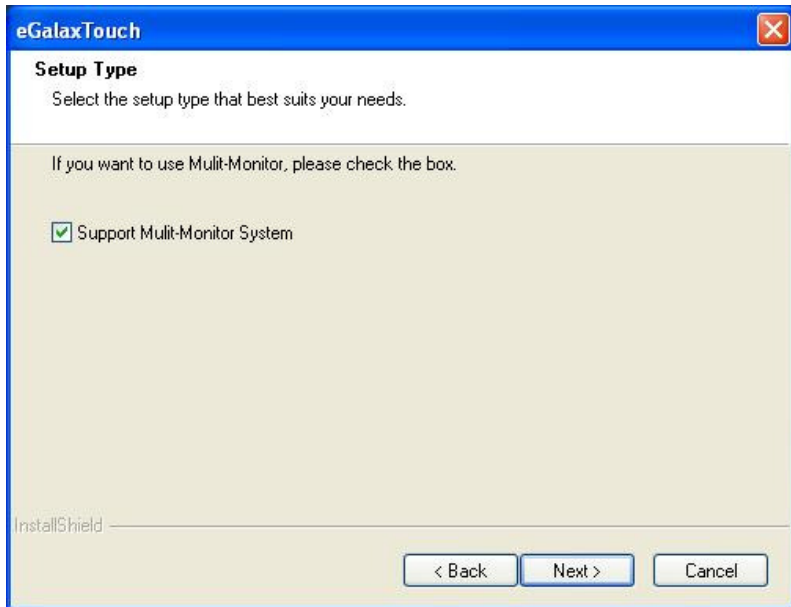
Select “None” and click “Next” button.



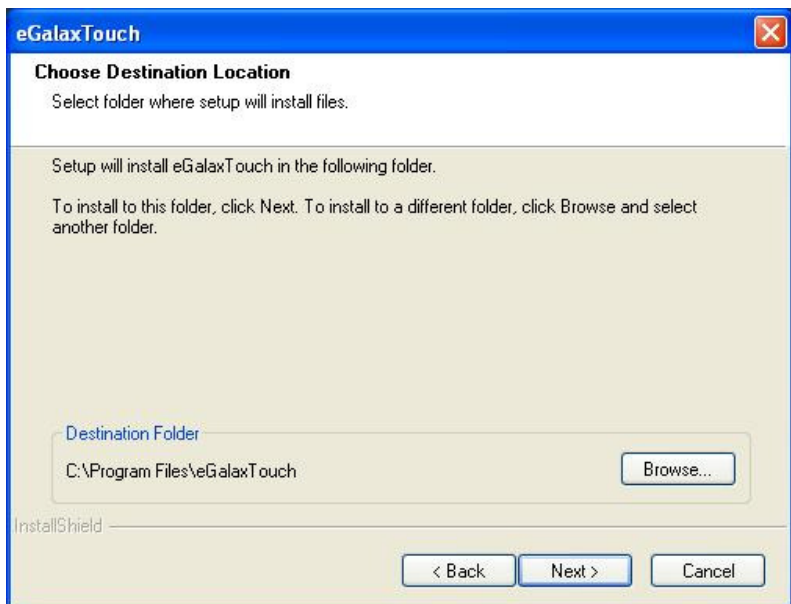
Click on the “OK” button.



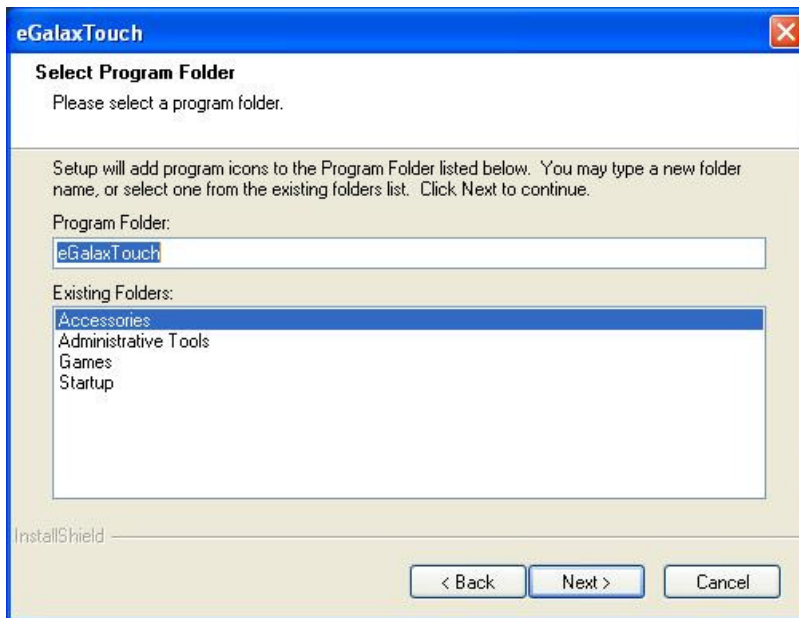
Ensure the “Support Multi-Monitor System,” box is checked, Click on the “Next” button.



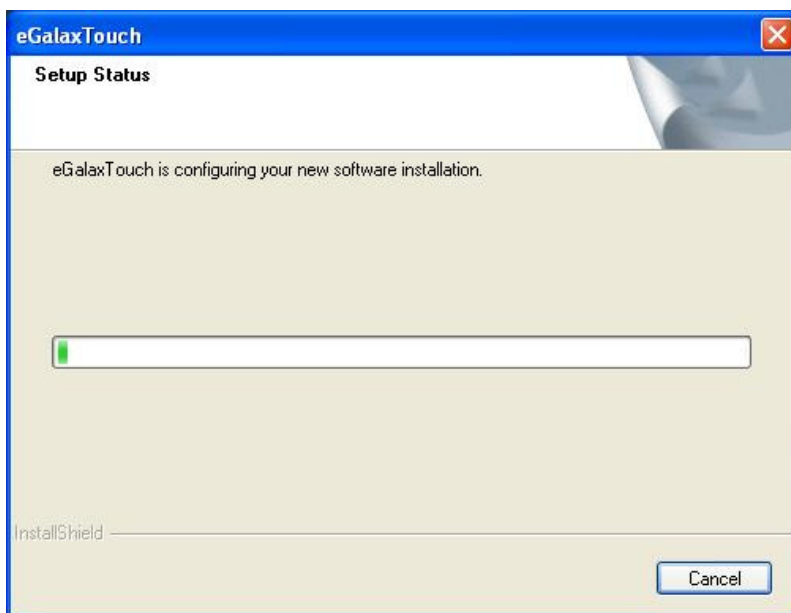
Select the installation location by pressing “Browse” button. Then click “Next” to continue.



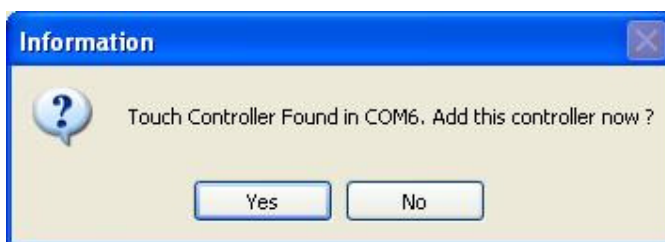
Click on the “Next” button when the following window appears.



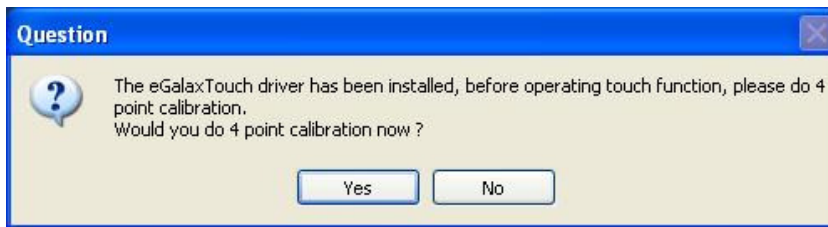
Then it starts install.



The installer detects the connected COM port. Click on the “Yes” button.



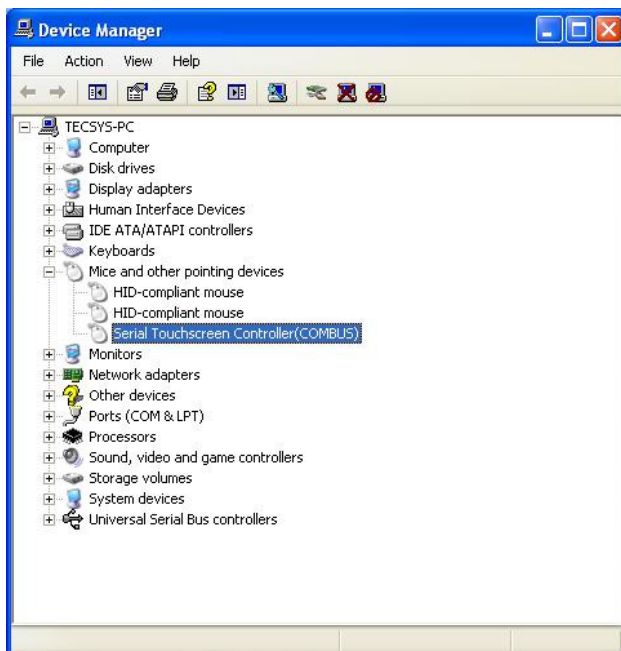
Click on the “Yes” button to proceed.



During the following window appears. Touch the center of circle for 15 sec. And it repeats four times in total.



Finally, open Device Manager to confirm the Touch Panel driver has been installed. Make sure that “Serial Touch Screen Controller” is registered under the “Mice and other Pointing Devices” icon.



2.7. Setup for Display

There is supplementary setup document for each display type.

About setup procedure of display, please see additional documents as below.

For TFTST-A20, TFTST-B20: “TFTST-A20, TFTST-B20 Setup Guide”

Installation for ELO (Tyco) Touch panel driver

Installation for the driver of other optional equipment

These display setup guide describes the procedures and cautions for setup the each display drivers.

3. Setup for Windows 7 Professional (or POSReady 7)

3.1. Operating System Installation

Windows 7 Professional and POSReady 7 can be installed in SATA HDD, without any special setting for installation

3.2. Intel Chipset Software Installation

Run "infinst_autol.exe" in the "ST-C10WinV1xxx\Intel\Chipset" folder in the Driver kit. After a while, the following window appears. Click on the "Next" button.

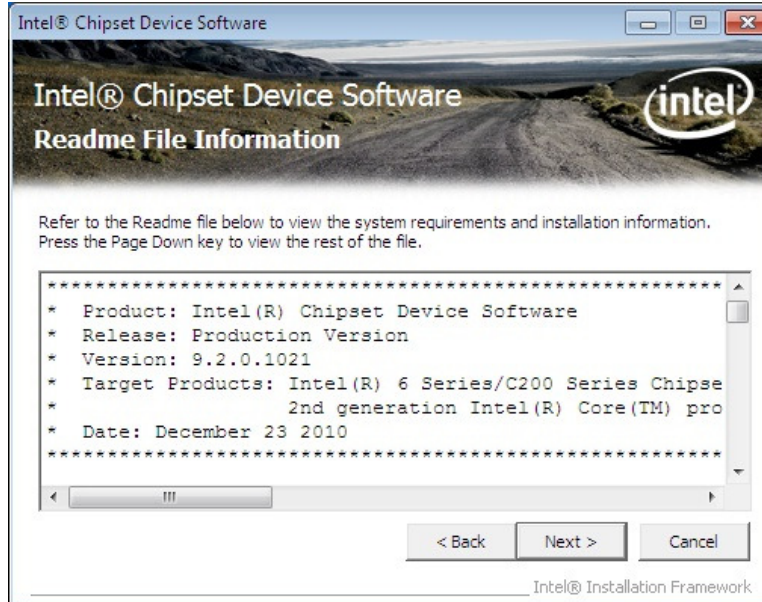
*xxx means version number of driver kit.



The “License Agreement” window appears. Confirm the contents. If you agree, click on the “Yes” button.

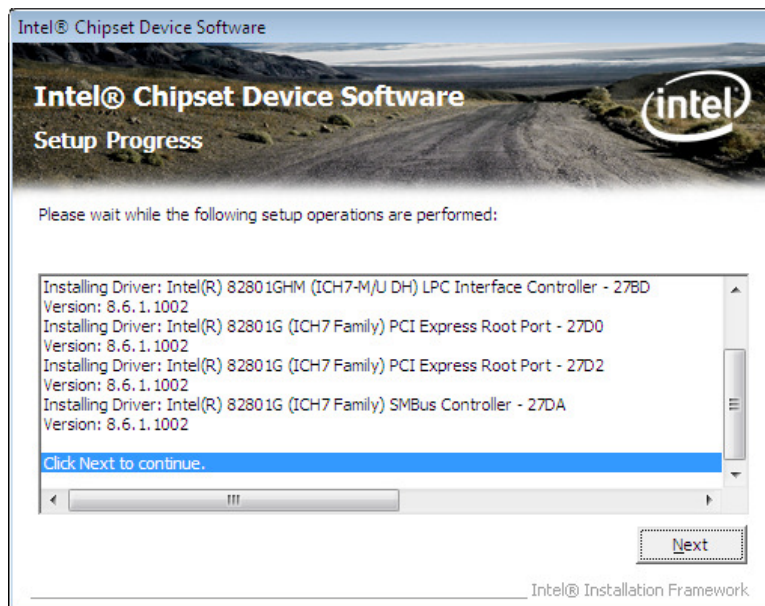


The “Readme File Information” window appears. Click on the “Next” button.



The "Setup Progress" window appears, and starts the installation.

After a while, the "Next" button is changed to the status that can be clicked, click on the button.



When the installation is completed successfully, the following window appears. Click on the "Finish" button.



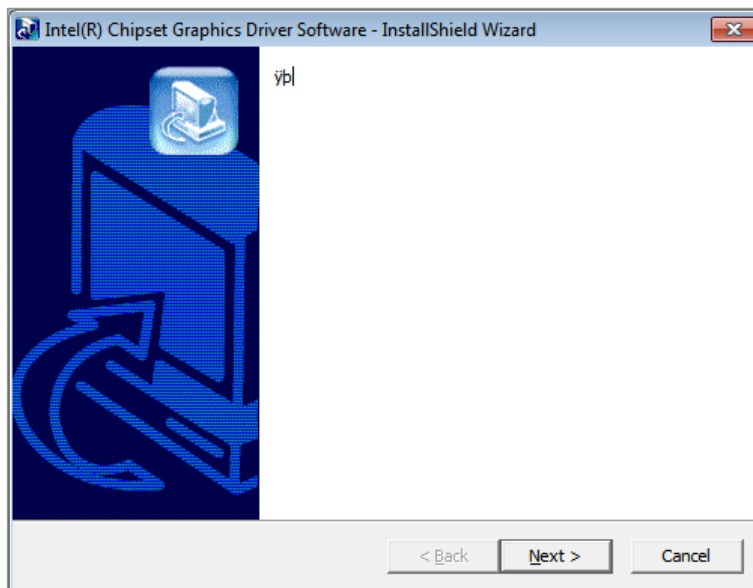
3.3. Intel Graphic Accelerator Driver Installation

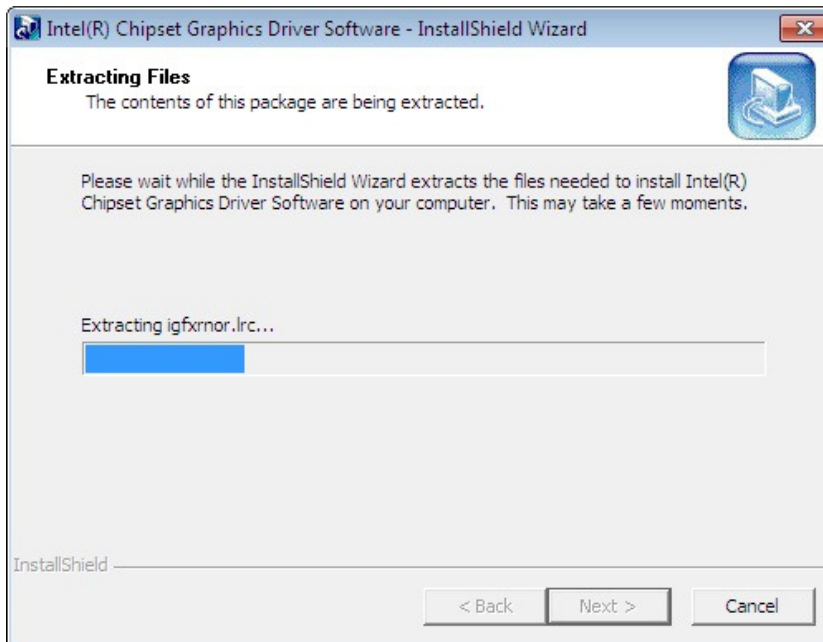
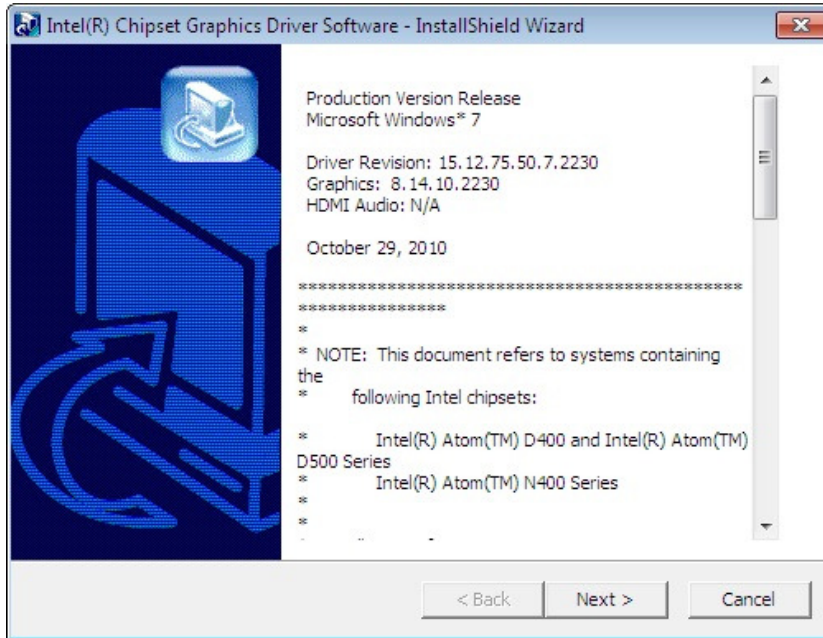
Run "Win7.exe" in the "ST-C10WinV1xxx\Intel\Graphic\7" folder in the Driver kit. The following window appears. Click on the "Next" button.

*xxx means version number of driver kit.

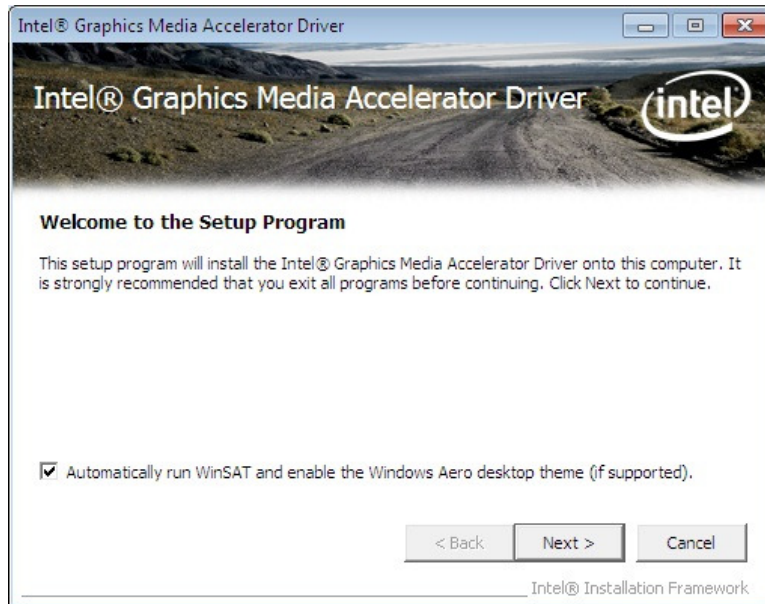
Note: Graphic Accelerator driver Installation for POSReady 7 (64bit)

The driver installer will prompt a wizard that shows some strange character at the beginning of installation process. Please click "Next" to proceed as it might not affect the driver installation.

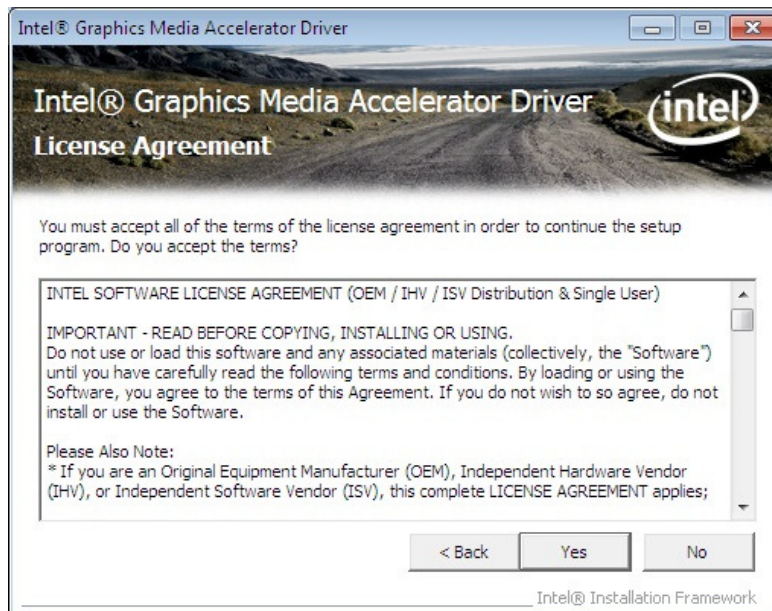




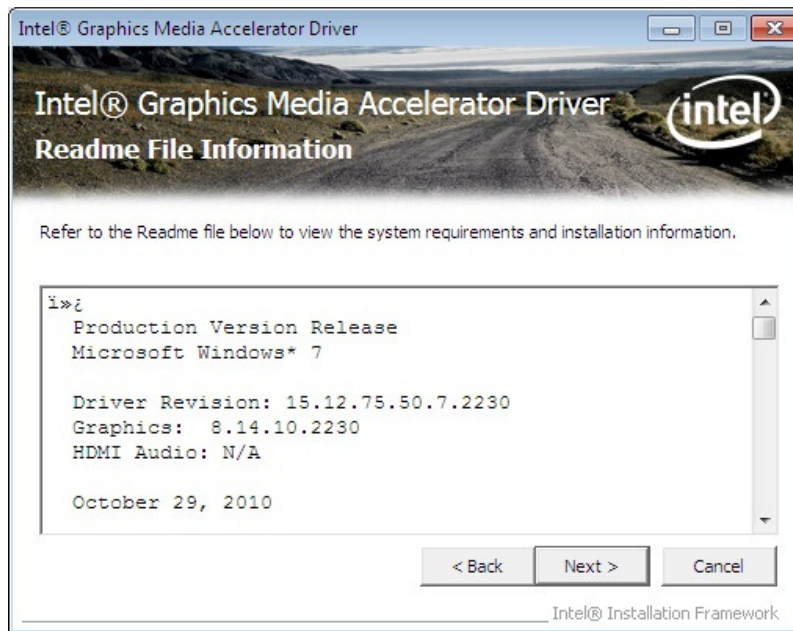
After a while, the following window appears. Click on the “Next” button.



The “License Agreement” window appears. Confirm the contents. If agree, click on the “Yes” button.

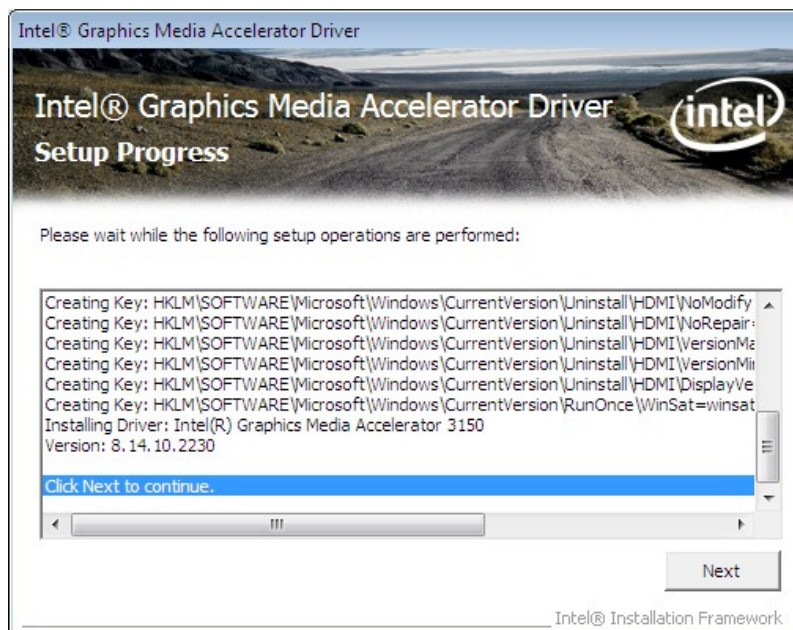


The “Readme File Information” window appears. Click on the “Next” button.



The “Setup Progress” window appears, and starts the installation.

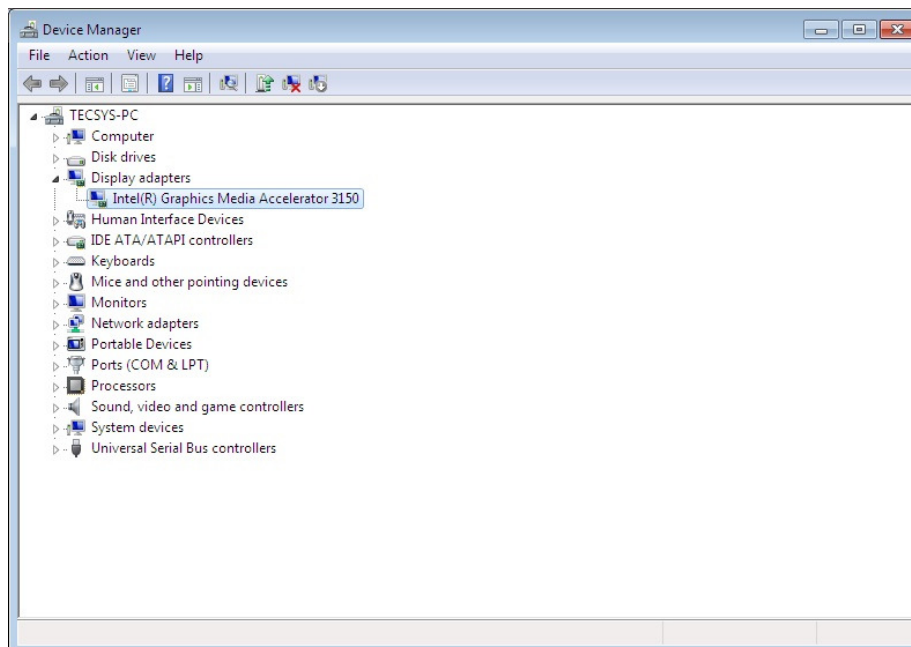
After the “Next” button is changed to the status that can be clicked, click on the button.



When the installation is completed successfully, the following window appears. Check the “Yes, I want to restart this computer now” radio button, then click on the “Finish” button to reboot POS Terminal.



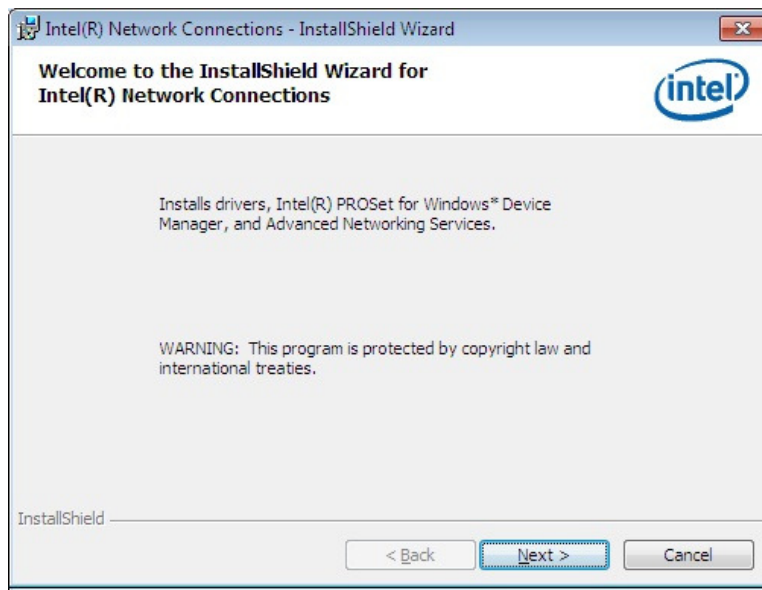
After rebooting the POS Terminal, open Device Manager to confirm the graphic driver has been installed. Make sure that “Intel(R) Graphics Media Accelerator 3150” is registered under the “Display adapters” icon.



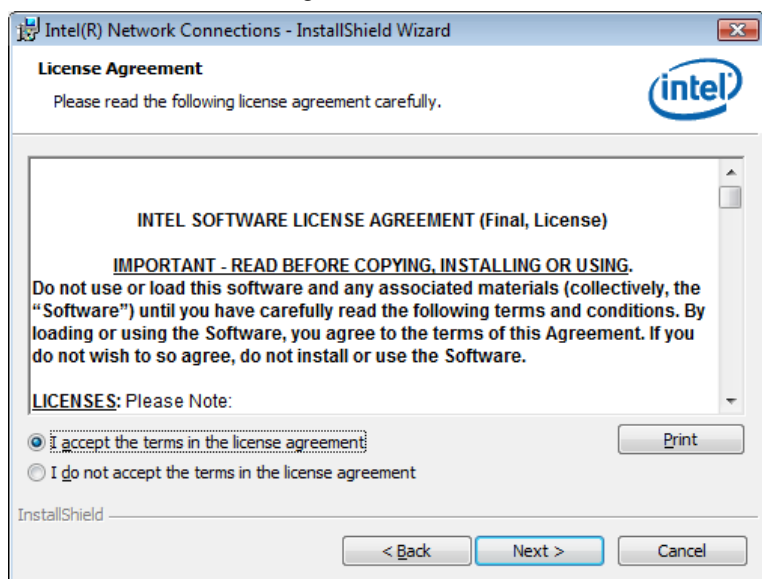
3.4. Intel Network Driver Installation

Run “PROWin32.exe” in the “ST-C10WinV1xxx\Intel\LAN\7” folder in the Driver kit. After a while, the following window appears. Click on the “Next” button.

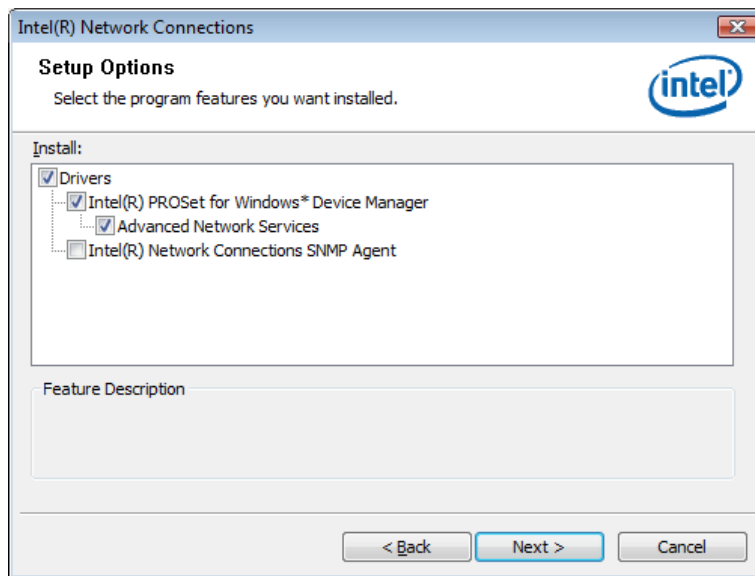
*xxx means version number of driver kit.



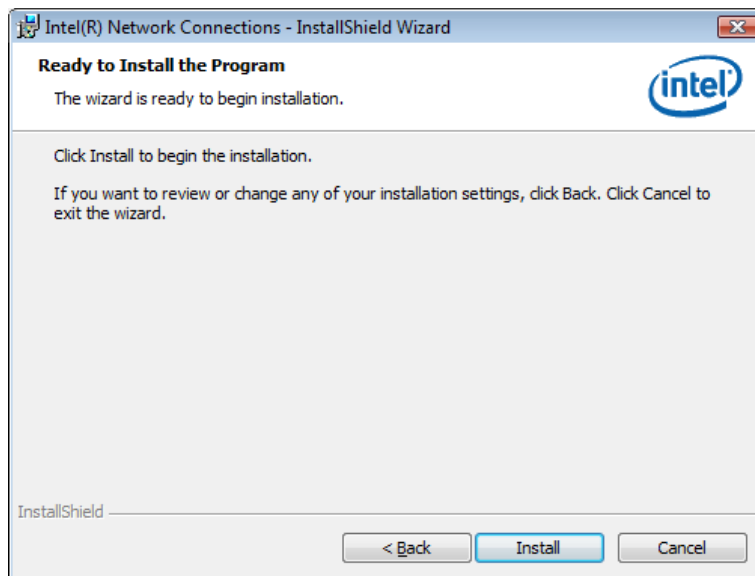
The “License Agreement” window appears. Confirm the contents. If agree, check the “I accept the terms in the license agreement” radio button and click on the “Next” button.



The “Setup Options” window appears. If there is nothing specially required, click on the “Next” button with default condition.

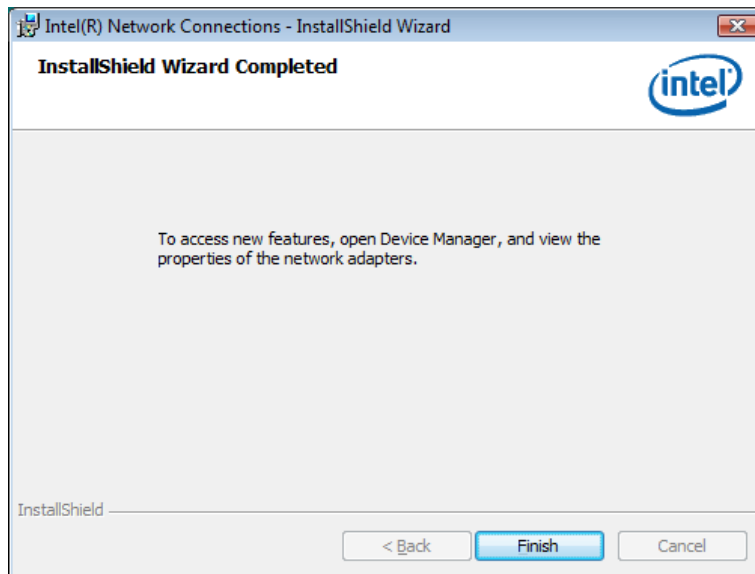


The following window appears. Click on the “Install” button to start the installation.

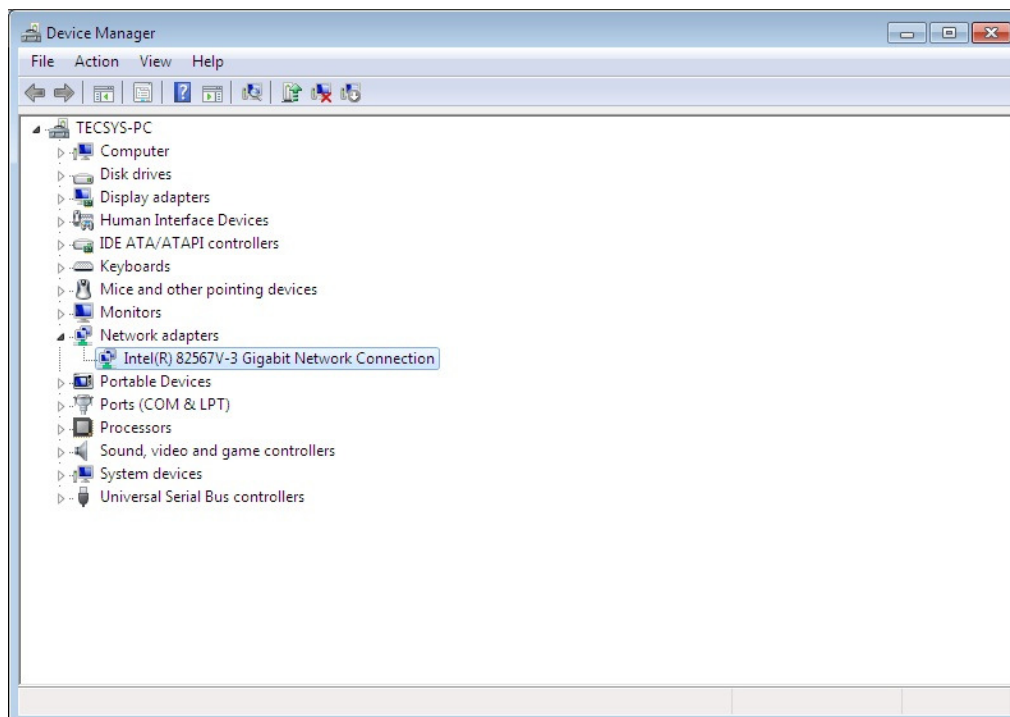


After completing the installation, the following window appears. Click on the “Finish” button to complete the installation.

Note: Then, reboot the computer.



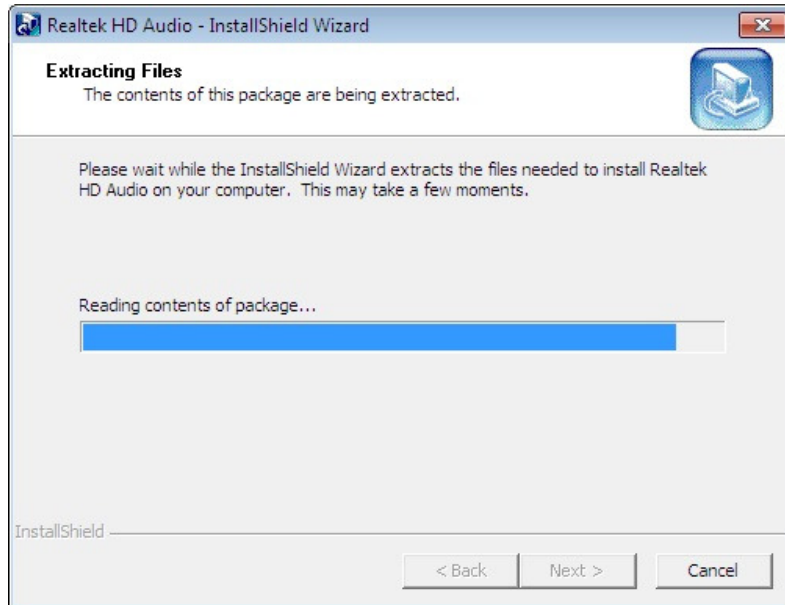
Open Device Manager to confirm the network driver has been installed. Make sure that “Intel(R) 82567V-3 Gigabit Network Connection” is registered under the “Network adapters” icon.



3.5. Realtek Audio Driver Installation

Run “Vista_Win7_R256.exe” in the “ST-C10WinV1xxx\Intel\Audio\7” folder in the Driver kit. After a while, the following window appears, click on the “Yes” button.

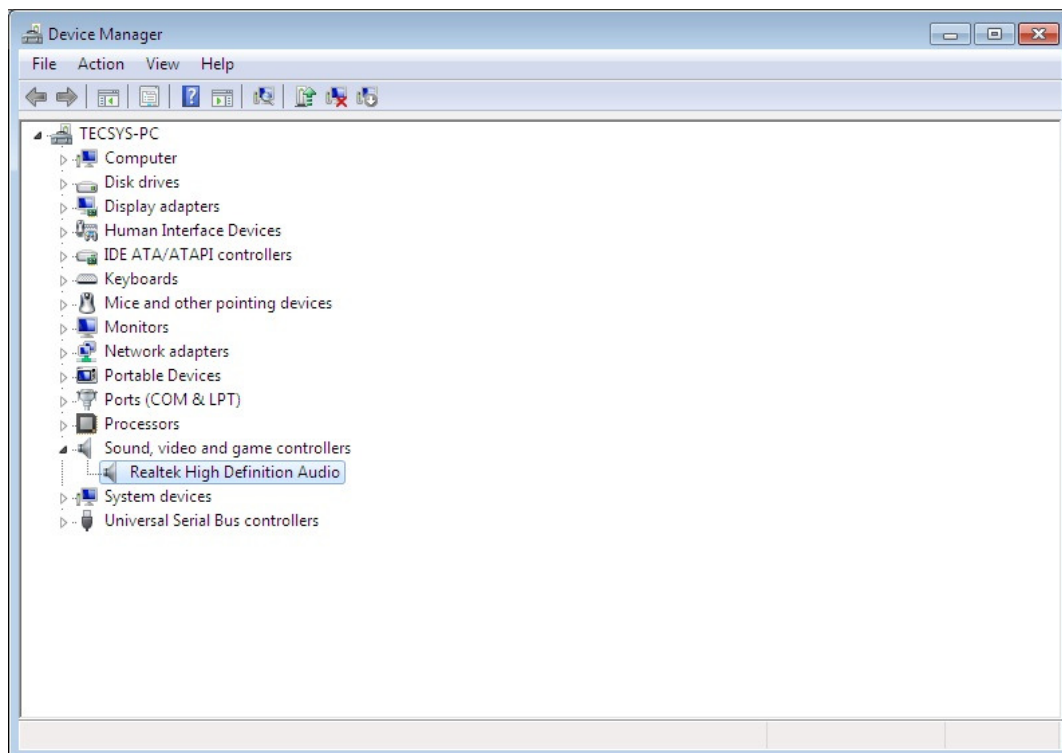
*xxx means version number of driver kit.



When the installation is completed successfully, the following window appears. Check the “Yes, I want to restart my computer now” radio button, and then click on the “Finish” button to reboot POS Terminal.



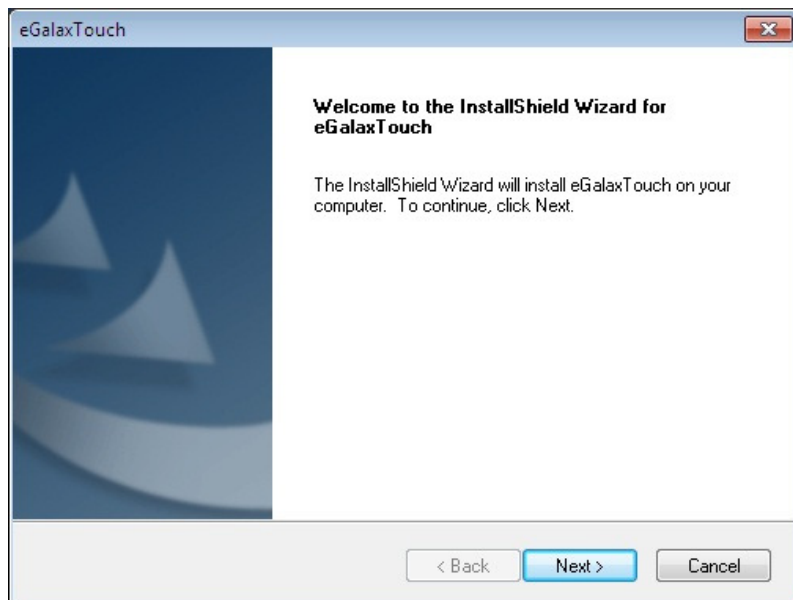
After rebooting the POS Terminal, open Device Manager to confirm the audio driver has been installed. Make sure that “Realtek High Definition Audio” is registered under the “Sound, video and game controllers” icon.



3.6. Universal Touch Panel Driver Installation

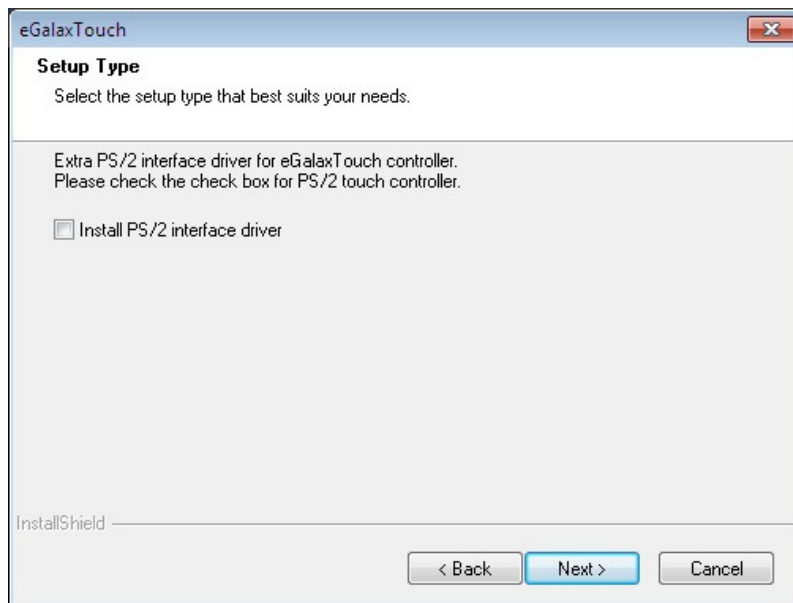
Run “setup.exe” in the “ST-C10WinV1xxx\TouchPanel\Universal\7\Win7_5.6.0.6806” folder in the Driver kit. After a while, the following window appears, click on the “Next” button.

*xxx means version number of driver kit.

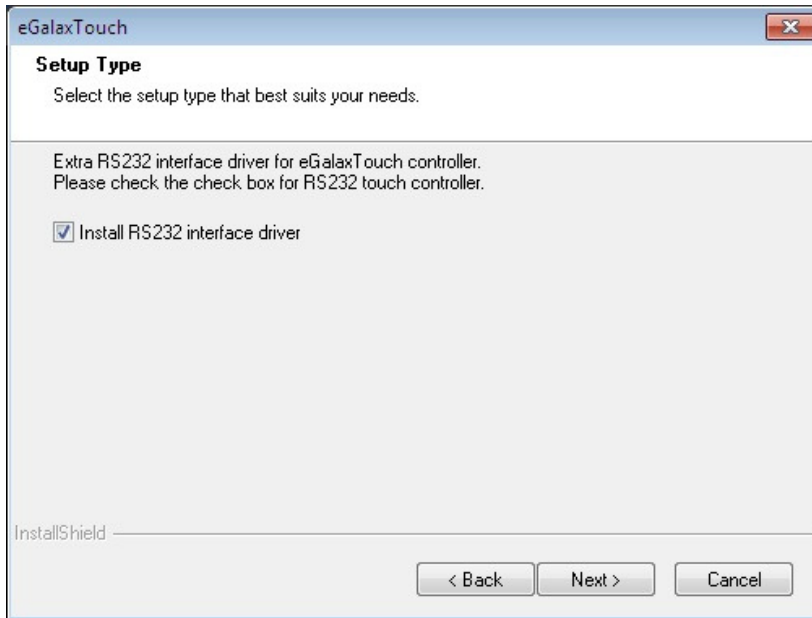


The following window appears. Click on the “Next” button.

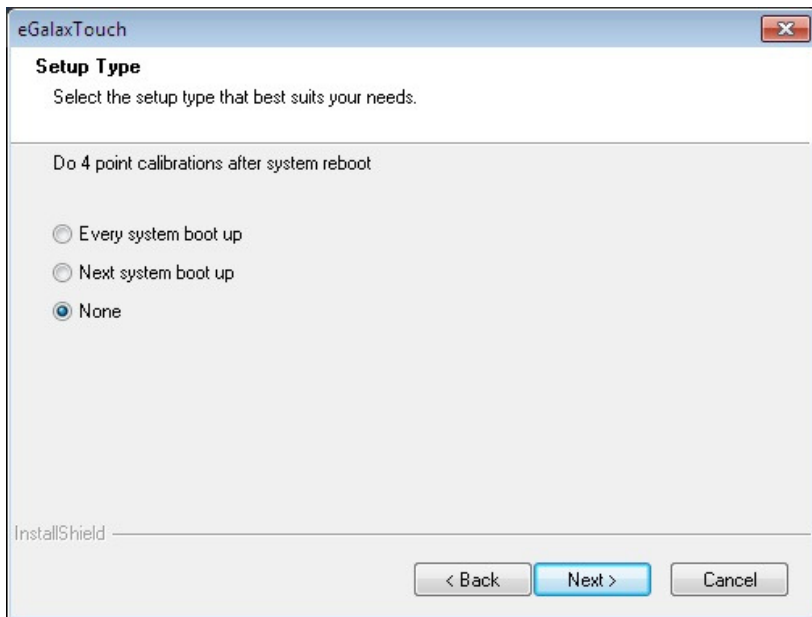
* Do not check the “Install PS/2 interface driver”.



Check “Install RS232 interface driver” box, Clickon the “Next” button.



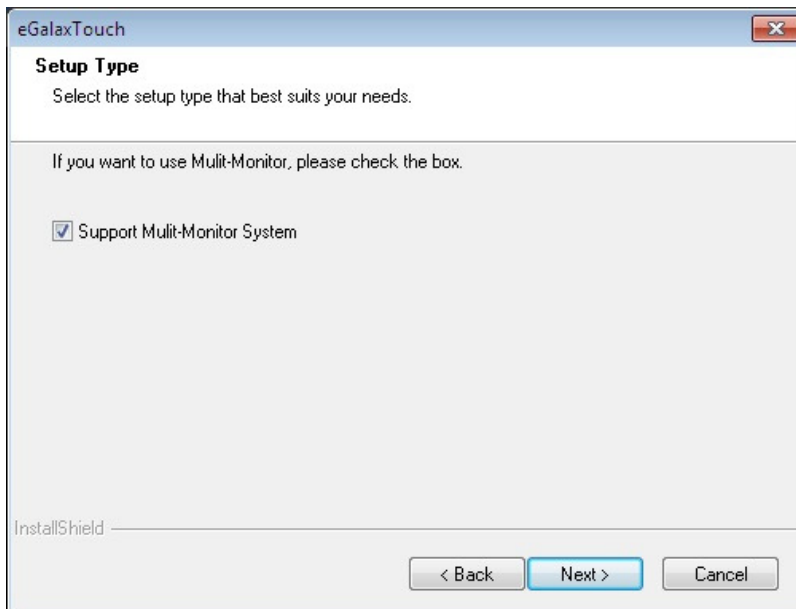
Select “None” and click “Next” button.



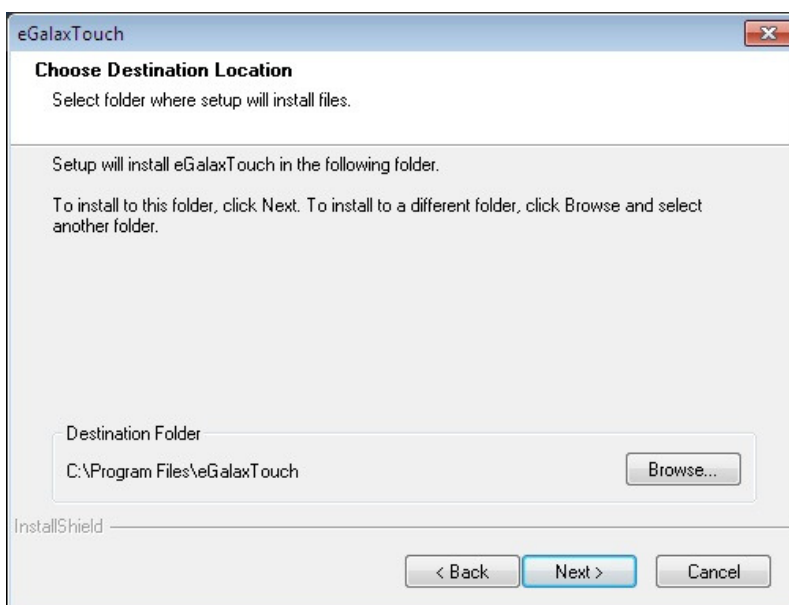
Click on the “OK” button.



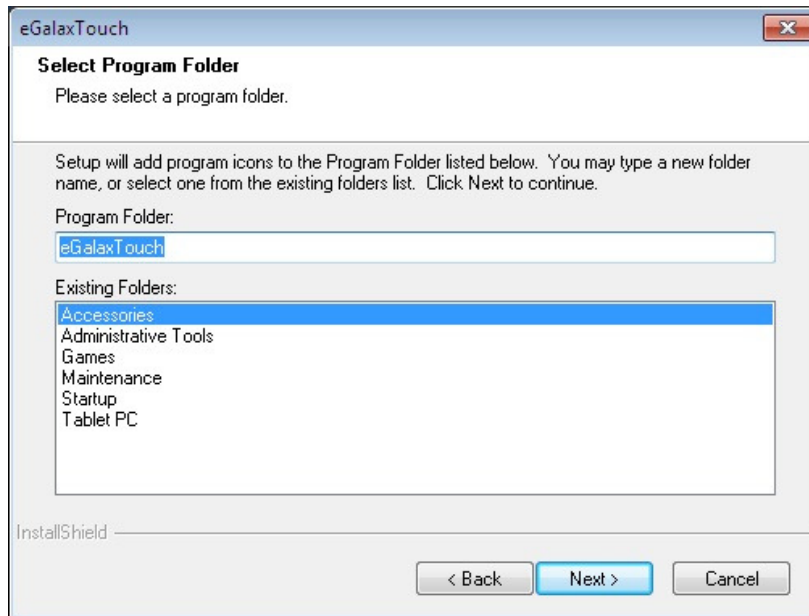
Ensure the “Support Multi-Monitor System,” box is checked.,Click on the “Next” button.



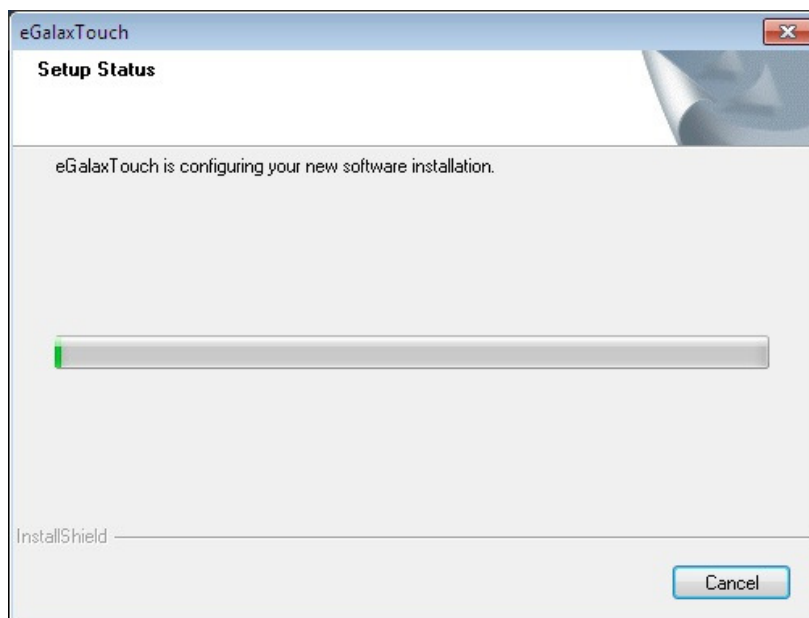
Select the installation location by pressing “Browse” button. Then click ”Next” to continue.



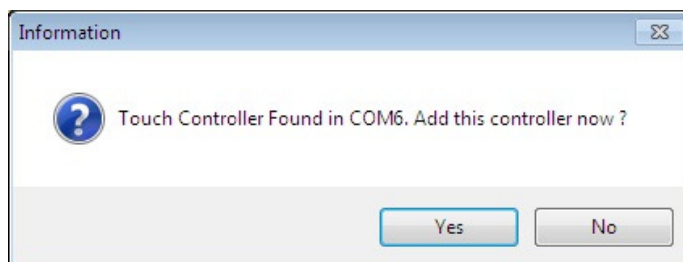
Click on the “Next” button when the following window appears.



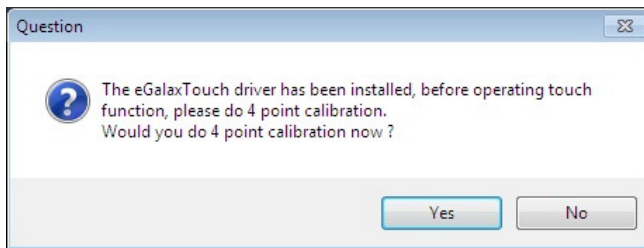
Then it starts install.



The installer detects the connected COM port. Click on the “Yes” button.



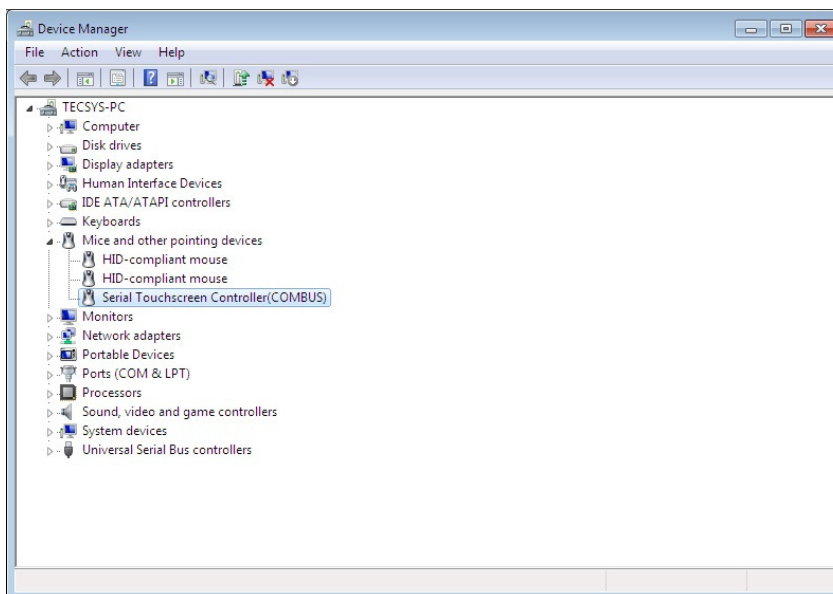
Click on the “Yes” button to proceed.



During the following window appears. Touch the center of circle for 15 sec. And it repeats four times in total.



Finally, open Device Manager to confirm the Touch Panel driver has been installed. Make sure that “Serial Touch Screen Controller” is registered under the “Mice and other Pointing Devices” icon.



3.7. Setup for Display

There is supplementary setup document for each display type.

For TFTST-B20: “TFTST-A20, TFTST-B20 Setup Guide”

Installation for ELO (Tyco) Touch panel driver

Installation for the driver of other optional equipment

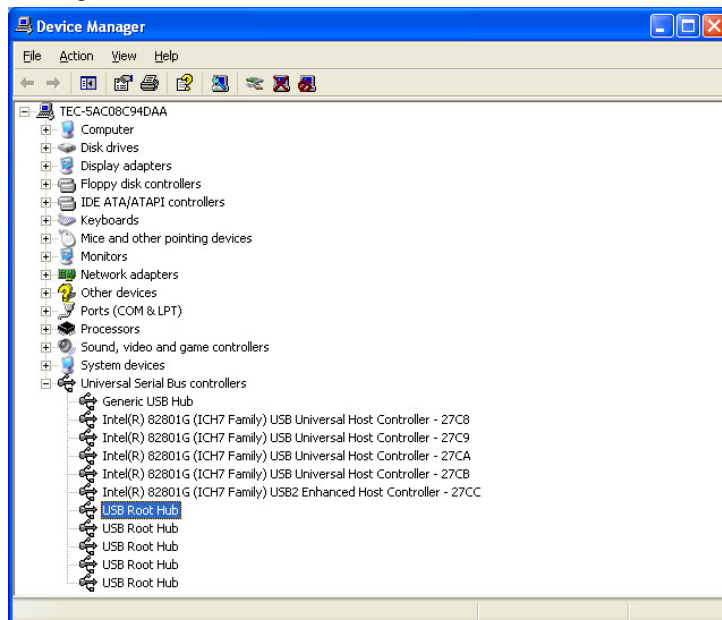
These display setup guide describes the procedures and cautions for setup the each display drivers.

4. Notice and Limitation

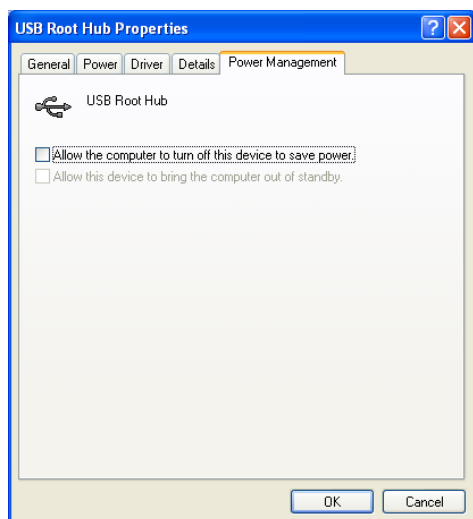
4.1. Notice

4.1.1. About Power management of USB-HUB

Open the property of the "USB Root Hub" under the "Universal Serial Bus controllers" of Device Manager.



Click on the "Power Management" tab. Uncheck "Allow the computer to turn off this device to save power" check box, and click on the "OK" button.

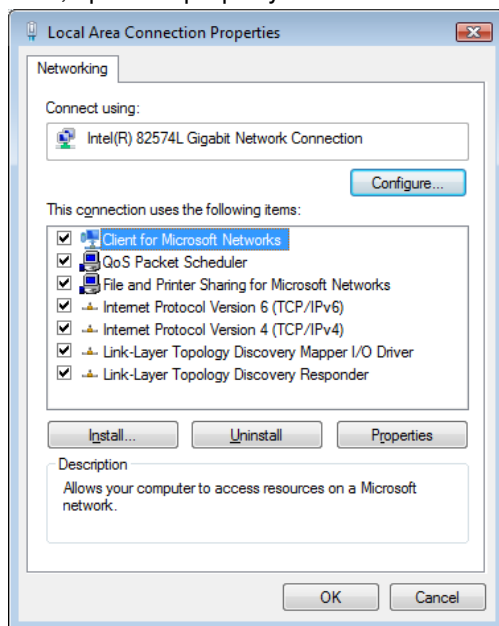


The above steps have to be performed for all the "USB Root Hub".

4.1.2. Setting of Wake On LAN

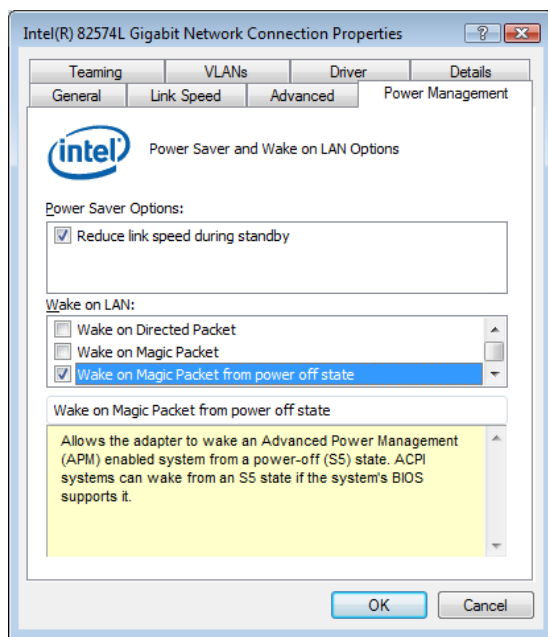
The LAN controller of ST-C10 possesses Wake On LAN feature. However, it is disabled in the default setting. If this feature is needed, enable the Wake On LAN function by the following settings.

First, open the property of Local Area Connection, and click on the “Configure...” button.



Select the “Power Management” tab and check the “Wake on Magic Packet from power off state” check box of “Wake on LAN”, and click on the “OK” button.

Note: Only “Wake on Magic Packet from power off state” is possible.



4.1.3. Dual Display connection combinations list

ST-C10 supports the display below.

TFTST-B20 (VGA - ELO(Tyco) Touch Panel)

There are some restrictions in using dual display function, please refer to the tables below and please handle with care.

[Restriction of dual display function]

	TFTST-B20 (VGA)	ST-C10 (LVDS)
TFTST-B20 (VGA)		Support
TFTST-C10 (LVDS)	Support	

Not Support : can not use dual display by limitation between Intel graphic driver and PCI card.

Support: can use dual display by using Intel graphic driver.

[Restriction of dual touch panel function]

	TFTST-B20 (VGA)	ST-C10 (LVDS)
TFTST-B20 (VGA)		Support with limitation
ST-C10 (LVDS)	Support With limitation	

Support with limitation : can use dual touch panel with limitation.

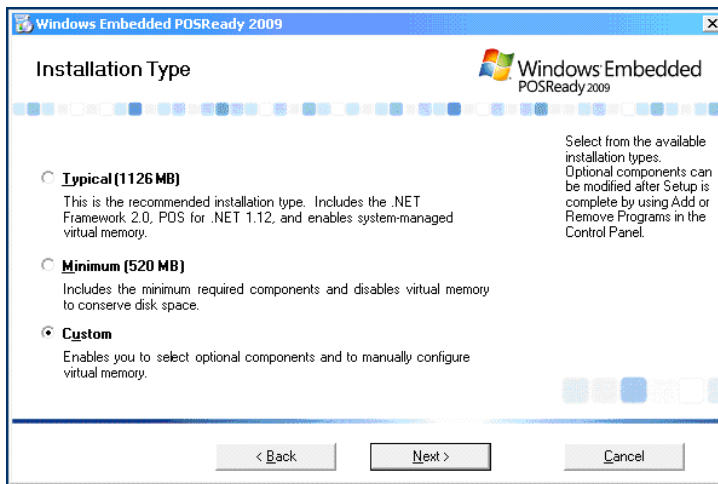
4.1.4. "Optional Components" setting in POSReady 2009 installation

During POSReady 2009 installation, it is necessary to select "Custom" installation in "Installation Type" wizard. Its allows installation of "Additional Drivers" component in "Optional Components" wizard.

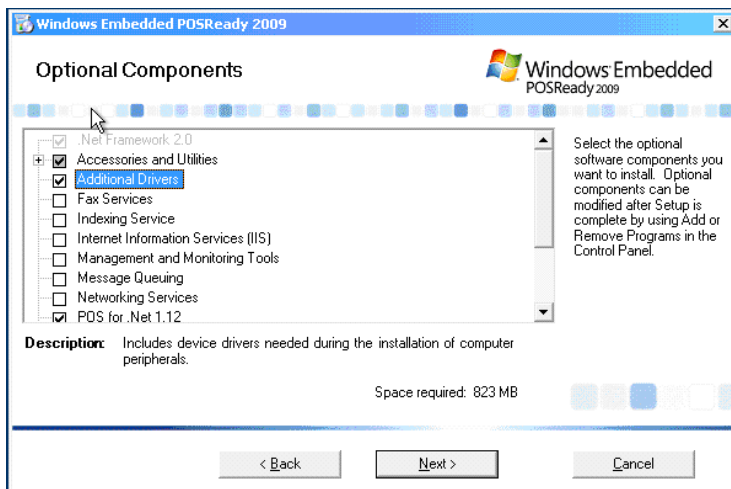
If "Typical" or "Minimum" is selected in "Installation Type" wizard, or "Additional Drivers" component is not checked on "Optional Components" wizard, the screen prompts which requests "*.sys" file or "*.dll" file is displayed during driver installation. (Chipset, Audio, OPOS driver, etc)

Refer to below instruction to install "Additional Drivers" component in "Optional Components" wizard.

Select "Custom" in "Installation Type" wizard and click on the "Next" button.



Check "Additional Drivers" in "Optional Components" wizard.



Check other options if necessary, and click on the "Next" button.

Subsequently, follow the instructions of the Windows installer to complete the installation.

4.2. Limitation

4.2.1. SD card device is always detected without inserting SD card.

In OS, SD card device is always detected as USB storage device as D: drive even without inserting SD card.

But, D: drive cannot be accessed if SD card is not inserted.

Performing "Safely Remove Hardware" for SD card will disable D: Drive. This makes second read of SD card is not possible User needs to reboot the system in order to reactivate the SD card drive..

4.2.2. Limitation about Wake up by USB keyboard / mouse from S3

In BIOS menu, if "Advanced menu"-> "ACPI Settings" -> "ACPI Sleep State" is set to "S3(Suspend to RAM)",

OS can go to S3 standby.

But, there is restriction for wake-up by USB keyboard and mouse from S3 in Windows Xp, WEPOS, POSReady2009.

If it is necessary to enable wake-up by USB keyboard and mouse from S3, registry key setting is required.

This restriction is mentioned in below Microsoft Homepage.

<http://support.microsoft.com/kb/841858/en>

Registry key setting:

```
HKEY_LOCAL_MACHINE\SYSTEM\CurrentControlSet\Services\usb  
"USBBIOSx"=DWORD:00000000
```

Below setting is required to enable wake-up by USB keyboard and mouse from S1/S3.

USB Keyboard setting:

Control Panel->System->Device Maneger->Keyboard -> HID Keyboard Device->Power Management->

->Check "Allow this device to bring the computer out of standby".

USB mouse setting:

Control Panel->System->Device Maneger->Keyboard -> HID compliant mouse->Power Management->

->Check "Allow this device to bring the computer out of standby".

4.2.3. Extended display mode in POSReady2009

In POSReady2009, if "Extended Desktop" mode is set in Intel Graphic Driver and change to other mode ("Single Display" or "Twin" or "Dual Display Clone"), it cause blue screen error and automatically reboot.

This is restriction of POSReady2009.

(Microsoft HP: <http://support.microsoft.com/kb/959252>)

To prevent this problem, user need to download and install the patch from above Microsoft Homepage.

Download the patch file " WindowsXP-KB959252-v2-x86-ENU.exe" for Windows XP, x86 edition, and install to the machine.

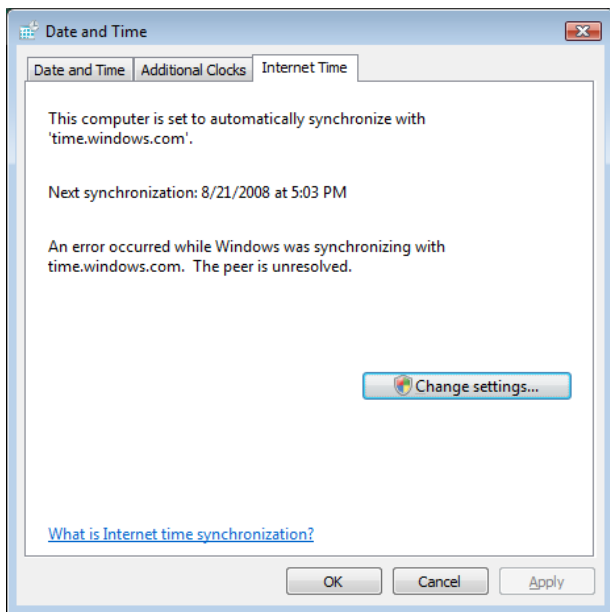
Then, Extended display mode can be displayed and changed to other mode correctly.

4.2.4. Limitation of Windows Time Service

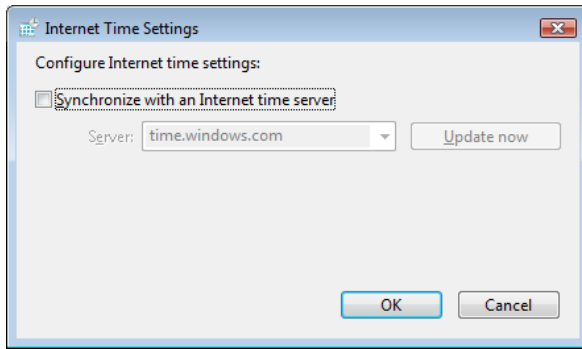
In normal Windows system, Windows Time Service adjusts system time automatically via network with NTP protocol. Usually, this service functions effectively in the environment that can access the Internet. In an environment without Internet access, Windows Time Service will not work properly, which make the self-adjustment function cannot set the time correctly, and generates a gap in the standard time. So, it is recommend to stop this service when using ST-C10 in the environment which does not connect with the Internet.

This service can be stopped by sequences below.

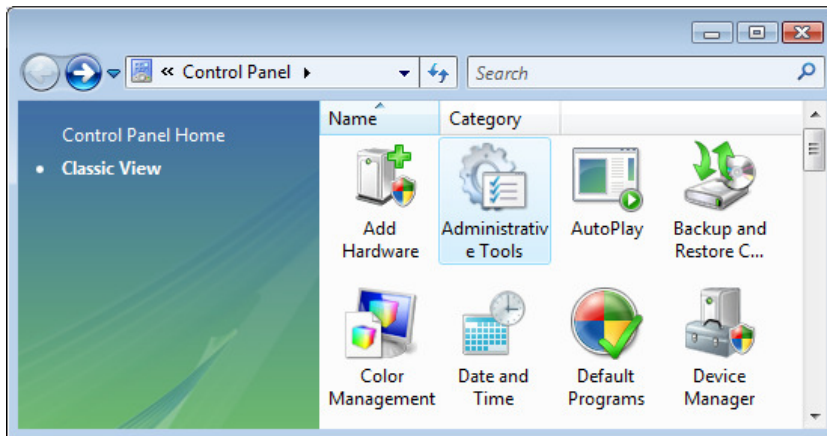
Open "Date and Time" from "Control Panel". Then, select the "Internet Time" tab and click on the "Change settings..." button.



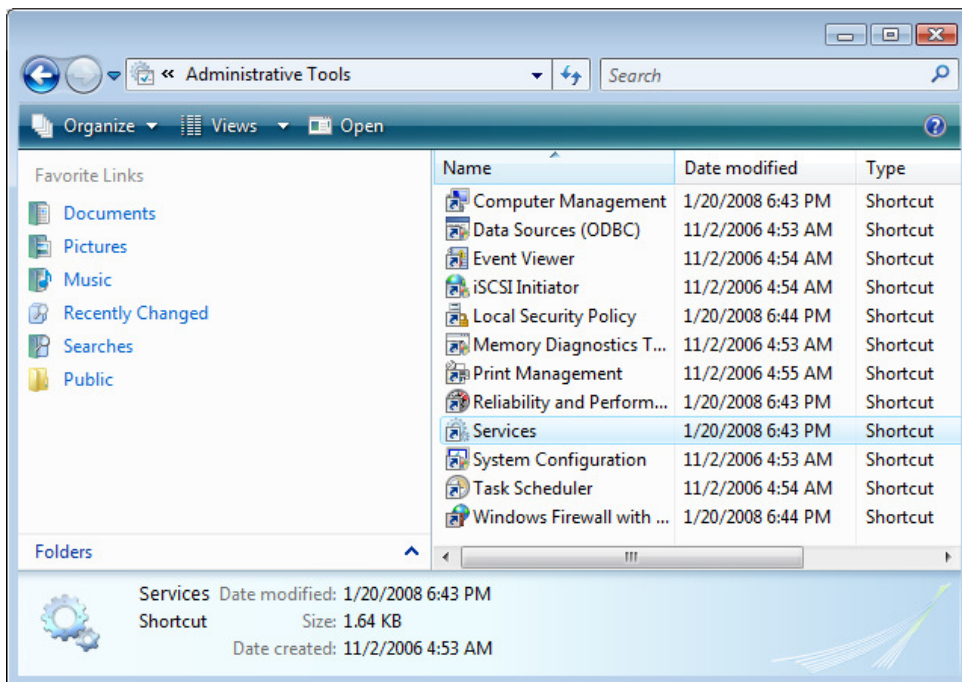
Uncheck the "Synchronize with an Internet time server" check box.



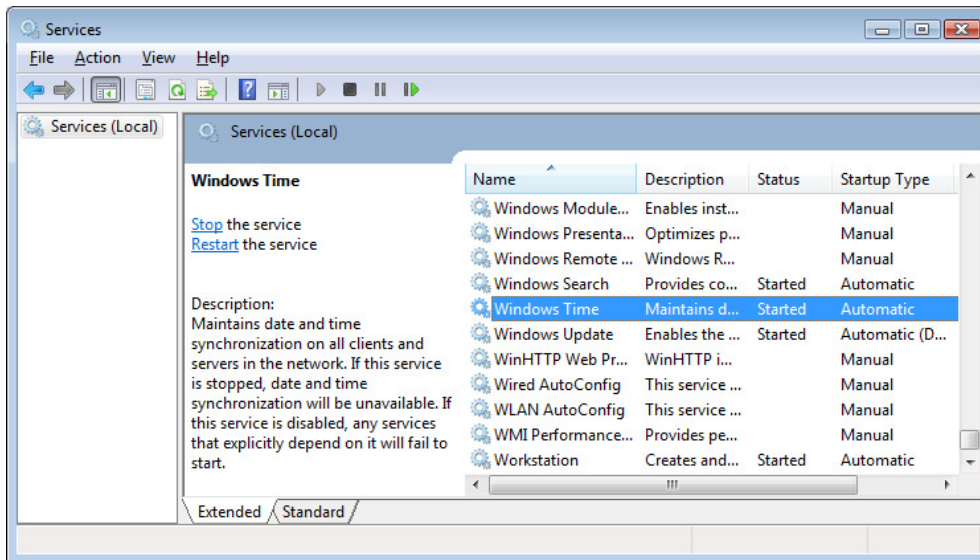
Next, open “Administrative Tools” from “Control Panel”.



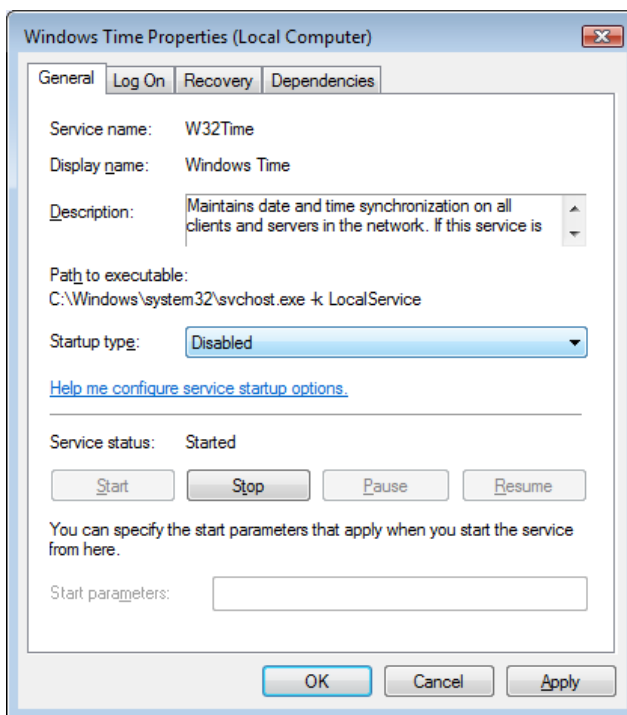
Then, open the “Services” from displayed tools.



Open the property of the "Windows Time" from displayed services.



Select the "General" tab and change the "Startup type" value to "Disabled".



For more detail information, please refer to the Microsoft technical support site.